

Recombinant Human CD326 / Cluster of Differentiation 326,

Animal Free & Carrier Free

Cat #: C-CYP360

Size: 5µg, 20µg, 100µg, 500µg, 1mg

Shipping: Blue Ice

Product Overview

Epithelial cell adhesion molecule (EpCAM) / CD326 is a pan- epithelial differentiation antigen that is expressed on almost all carcinomas as 17-1A(mAb) antigen. Besides, EpCAM is also involved in cell signaling, migration, proliferation, and differentiation. It is intricately linked with the Cadherin-Catenin pathway and hence the fundamental WNT pathway responsible for intracellular signaling and polarity. Recently, The epithelial cell adhesion molecule (Ep-CAM) is known to express in most epithelial malignancies and was reported as a tumor marker or a candidate of molecular targeting therapy. EpCAM can be used as diagnostic marker for various cancers. It appears to play a role in tumorigenesis and metastasis of carcinomas, so it can also act as a prognostic marker and as a potential target for immunotherapeutic strategies.

Product Information

Source: *Escherichia Coli*.

Purity: >95% as determined by SDS-PAGE. Ni-NTA chromatography.

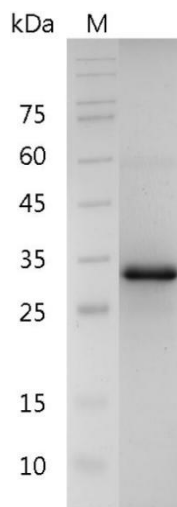
Biological Activity: Measure by the ability of the immobilized protein to support the adhesion of the 3T3 cells. The ED50 for this effect is 0.2-1.7ng/mL.

Endotoxin: <0.1EU per 1µg of the protein by the LAL method.

Amino acid sequence:

MQEECVCENYKLAVNCFVNNNRQCQCTSVGAQNTVICSKLAAKCLVMKAEMNGSKLGRRAKPEGALQNNNDGLYDPDCDESGLFKAKQ
CNGTSMCWCVNTAGVRRTDKDTEITCSERVRTYWIIIELKHKAREKPYDSKSLRTALQKEITTRYQLDPKFITSILYENNVITIDLQNSSQKT
QNDVDIADVAYYFEKDVKGESLFHSHKMDLTVNGEQLDLDPGQTLIYYVDEKAPEFSMQGLK with polyhistidine tag at the C-terminus.

Formulation: Lyophilized from a sterile filtered aqueous solution in 1×PBS, pH 8.0.



SDS-PAGE analysis of recombinant human CD326

Usage Method

1. Before opening, it is recommended to centrifuge at 3000-3500 rpm for 5 minutes.
2. Reconstitute to a concentration of 0.1-1.0 mg/mL in sterile distilled H₂O. Allow the solution to sit at room temperature for at least 20 minutes to ensure complete dissolution. Avoid vigorous vortexing.
3. The reconstituted solution can be stored at 2-8°C for up to 1 week.
4. For long-term storage, it is recommended to further dilute the solution with a carrier protein (such as 0.1% BSA, 10% FBS, or 5% HSA) to a concentration of no less than 10 µg/mL and aliquot for storage at -20°C to -80°C for 3 to 6 months. If serum-free experiments are required, a 5% trehalose solution can be used as a carrier instead. Avoid repeated freeze-thaw cycles.

Storage

Physical Appearance	Storage	Stability
Lyophilized powder	-20°C to -80°C	1 year
Reconstitution (initial)	2°C to 8°C	Less than 1 week
Reconstitution (after dilution)	-20°C to -80°C	3 to 6 months

Note

The reagent is only used in the field of scientific research, not suitable for clinical diagnosis or other purposes.