

GMP Grade, Recombinant Human FGF basic

Cat#: C-BETA011

Size: 100 µg, 1mg

Source: *Escherichia coli*.

Product Information

Molecular Weight: Approximately 16 kDa, a single non-glycosylated polypeptide chain containing 146 amino acids.

Description : Accession # NP_001997, Ala144-Ser288, with an N-terminal met.

SDS-PAGE: 16.44 kDa, reducing conditions

Purity: > 95 %, as determined by SDS-PAGE, under reducing reducing conditions, visualized by coomassie staining.

Endotoxin: Less than 0.01 EU/µg of bEGF as determined by kinetic Limulus Amoebocyte Lysate (LAL) assay.

Biological Activity: Recombinant Human bFGF stimulates proliferation of BALB/3T3 cells, theEC50 for this effect is 0.001-0.02 ng/mL.

Physical Appearance: Sterile Filtered White lyophilized (freeze-dried) powder.

Formulation: Lyophilized from a 0.2 µm filtered concentrated solution in 10 mM PBS, pH 7.5 without carrier protein or preservatives.

Reconstitution: We recommend that this vial be briefly centrifuged prior to opening to bring the contents to the bottom. Reconstitute to a concentration of 0.1-1.0 mg/mL in **sterile distilled H₂O**. Stock solutions should be apportioned into working aliquots and stored at -20°C to -70°C. Further dilutions should be made in appropriate buffered solutions. **Do not reconstitute in cell culture media directly.**

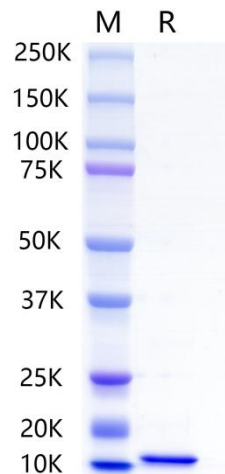
Shipping: 2°C to 8°C. Upon receipt, store it immediately at the temperature recommended below.

Stability & Storage: Use a manual defrost freezer and avoid repeated freeze-thaw cycles. A minimum of 12 months from date of shipping when stored at -20°C to -70°C as supplied. 4 weeks at 2°C to 8°C under sterile conditions after reconstitution. 4 months at -20°C to -70°C under sterile conditions after reconstitution.

Usage: Biogradetech bEGF product can be used for a variety of ex vivo cell culture applications such as research or further manufacturing.

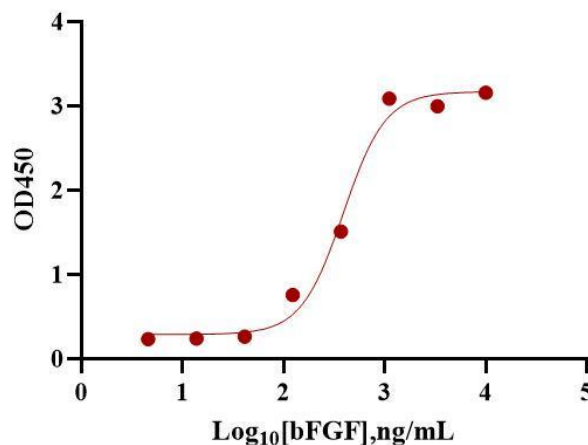
Quality statement: No animal- or human-derived materials were used for the manufacture of this product, unless otherwise stated in the respective Certificate of Origin.

DATA

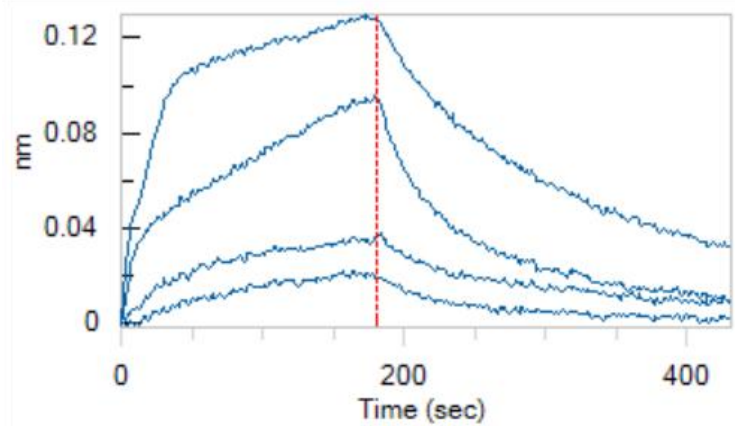


SDS-PAGE: Recombinant Human bFGF Protein SDS-PAGE 1 $\mu\text{g}/\text{lane}$ of Recombinant Human bFGF (Catalog# C-BETA011) was resolved with SDS-PAGE under reducing(R) conditions visualized by coomassie staining showing a single band at 16.44 kDa.

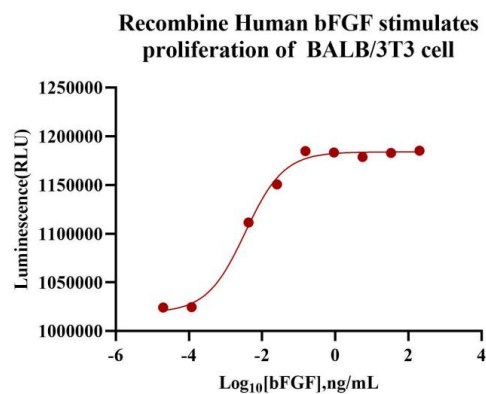
Recombinant Human bFGF, ELISA



Bioactivity-ELISA: Immobilized Recombinant Human bFGF (Catalog# C-BETA011) at 0.2 $\mu\text{g}/\text{well}$ can bind Human Glypican 3 with a linear range of 243.3 to 576.5 ng/mL.



Bioactivity-BLI: Loaded Human Glypican 3, can bind Recombinant Human bFGF(Catalog# C-BETA011) with an affinity constant of 11.85nM as determined in BLI assay (Octet R8) .



Bioactivity-Cell based assay: Recombinant Human bFGF (Catalog# C-BETA011) stimulates proliferation of BALB/3T3 cells, the EC50 for this effect is 0.001-0.02ng/mL.

References

1. Nugent, M.A. and R.V. Lozzo (2000) Int. J. Biochem. Cell Biol. 32:115.
2. Abraham, J.A. et al. (1986) EMBO J. 5:2523.
3. Prats, H. et al. (1989) Proc. Natl. Acad. Sci. USA 86:1836.
4. Foletti, A. et al. (2003) Cell. Mol. Life Sci. 60:2254.

Note:

The product listed herein is for research use only and is not intended for use in human or clinical diagnosis.