

## PLX5622 in AIN-76A Diet (1200 ppm) with control

**Cat #:** BGT-ODZ-100

**Storage:** -20°C protected from moisture and light

### Product Introduction

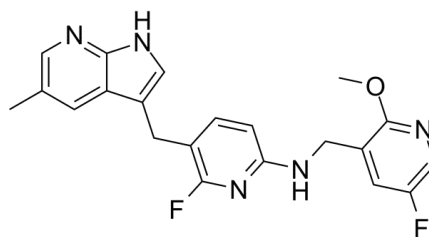
**PLX5622** is a selective, potent, brain-penetrant, and orally active CSF1R inhibitor ( $IC_{50} = 0.016 \mu M$ ;  $K_i = 5.9 \text{ nM}$ ) with favorable pharmacological properties, enabling extensive and specific microglial depletion both before and during disease progression. This diet contains PLX5622 at a concentration of 1,200 ppm (equivalent to 1,200 mg of PLX5622 per 1 kg of AIN-76A diet). In addition, an equal amount of PLX5622-free AIN-76A diet is provided complimentary as a blank control to facilitate experimental grouping and result comparison.

### Product Properties

**Appearance:** Light red (Solid)

**Cas No:** 1303420-67-8(PLX5622)

**Structural formula:**



### Instructions for Use:

- Experimental diet should be replaced every two days.
- The animal facility must maintain the highest possible cleanliness. Animals must be housed under SPF barrier conditions; an unclean environment will compromise the modeling outcomes.
- Unopened diet should be stored at -20°C. Opened diet can be stored at room temperature or 4°C and should be used as soon as possible.

- Due to the short half-life of the compound, tissue sampling should be performed immediately upon completion of the experiment.
- Feed consumption: For mouse weighing 20–25 g, daily feed consumption is approximately 3.5 g.

**Note:**

The product listed herein is for research use only and is not intended for use in human or clinical diagnosis.