

Universal Loading Control Antibody Panel

Cat #: D-KTD101

Size: 1 Kit

Storage: Store according to the recommended storage conditions of each component, stable for 12 months from date of shipment

Product Information

Reactivity: Human, Mouse, Rat

Applications: WB

Assay Principle

At least two factors need to be considered for the loading control antibodies chosen in the WB experiment: the experimental system and the sample to be tested. It is well known that loading control proteins are widely and stably expressed at high levels in almost tissues and cells, which can be used as a standard for semi-quantitative analysis. On the other hand, there are some uncertainties in the extraction and preparation of the sample to be tested, so it is also necessary to select an appropriate total protein as a positive control for the sample to be tested in WB experiments. The Universal Loading Control Antibody Cocktail is specially designed for WB experiments and provides a suitable loading control product solution.

The cocktail contains:

- ① Three most commonly used loading control antibodies of classic GAPDH, β -Actin and β -Tubulin quoted from hundreds of citations, which can be used for samples of common species including human, mice, rat, etc., are widely used as loading control in different sample type and molecular weight;
- ② A ready-to-use WB positive control, which can be directly loaded to provide a real WB experimental reference;
- ③ Super Antibody Dilution Buffer can enhance the WB target band signal, eliminate background interference and make WB experiments easier. The cocktail set has been optimized to achieve the best results. The components can also be ordered separately.

Materials Supplied and Storage Conditions

Component	Component name	Size	Application	storage condition
D-AKE1020	Anti-GAPDH Mouse Mab Antibody(2B5)	60 μ L*1 Tube	Observed band 37 kD, widely used	-20°C
D-AKE1010	Anti- β -Actin Mouse Mab Antibody(1C7)	60 μ L*1 Tube	Observed band 43 kD, widely used	-20°C
D-AKE1030	Anti- β -Tubulin Mouse Mab Antibody(3G6)	60 μ L*1 Tube	Observed band 55 kD, widely used	-20°C
D-KTD101-WB	WB Positive Control	100 μ L*1 Tube	ready to use	-20°C
D-AKE103	Super Antibody Dilution Buffer	50 mL*2 Bottle	ready to use, raise the signal and lower the background	4°C

Kit Application

1.The recommended dilution ratio of the three antibodies is 1:1000-1:10000 (optimal 1:2000). The choice of internal reference antibody should ensure that the molecular weight difference between the target protein and the internal reference protein is more than 5 KD, and the internal reference protein in the sample is highly expressed and is not affected by experimental variables. Contains stabilizers, preservatives and glycerin. It is recommended to store at -20°C for a long time after being subpackaged.

2.The WB positive control is a ready-to-use reagent. It can be directly used for SDS-PAGE loading as a positive control in WB experiments. The recommended loading volume is 5-10 μ L. Contains glycerin, it is recommended to store at -20°C for a long time after being subpackaged.

3.Super Antibody Dilution Buffer is a ready-to-use reagent that can be directly used for the dilution and preparation of various primary or secondary antibodies to enhance the signal of the WB target protein and reduce the background

signal. After the antibody incubation, the diluted antibody should be stored at 4°C immediately for subsequent reuse.

Experimental results display

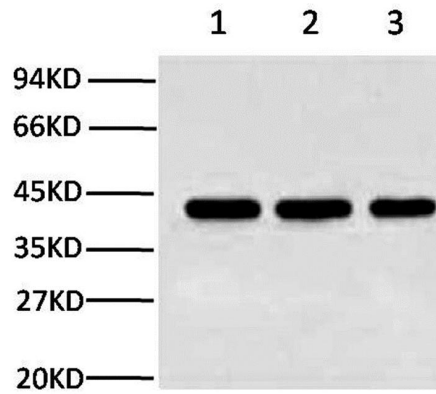


Fig. Western blot analysis of β -Actin expression in Rat brain (lane 1), HeLa cell lysate (lane 2), Mouse brain (lane 3), with Anti- β -Actin mouse monoclonal antibody (1C7) (D-AKE1010, 1:2000), the secondary antibody is HRP, Goat Anti-Mouse IgG (D-AKE21010, 1:10000).

Disclaimer

The reagent is only used in the field of scientific research, not suitable for clinical diagnosis or other purposes.