

Anti-ECFP-Tag Mab Antibody (6B11)

Cat #: D-AKE2280

Size: 50 μ L / 200 μ L

Storage: Store at -20°C . Avoid repeated freeze / thaw cycles.

Background

Cyan Fluorescent Protein (CFP) is a genetic mutant of green fluorescent protein (GFP) originally derived from the jellyfish *Aequorea victoria*

Product Information

Applications: WB

Suggested starting dilutions are as follows: WB (1:2000-1:5000).

Isotype: Mouse IgG

Reactivity: All Species Expected

Formulation: Liquid

Concentration: 1 mg/mL

Storage: Store at -20°C . Avoid repeated freeze / thaw cycles.

Storage Buffer: Liquid in PBS, pH 7.4, containing 0.02% Sodium Azide as preservative and 50% Glycerol.

Storage Instructions: Stable for one year at -20°C from date of shipment. For maximum recovery of product, centrifuge the original vial after thawing and prior to removing the cap. Aliquot to avoid repeated freezing and thawing.

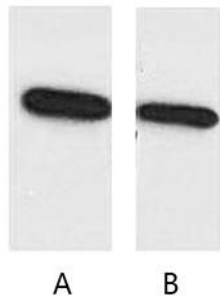


Fig. Western blot analysis of ECFP recombinant protein with anti-ECFP tag monoclonal Antibody (6B11) at 1:5000 (lane A) and 1:10000 (lane B) dilutions, separately.

Note:

The product listed herein is for research use only and is not intended for use in human or clinical diagnosis.