

Anti-CBP Tag Mab Antibody (12H5)

Cat #: D-AKE2190

Size: 50 μ L / 200 μ L

Storage: Store at -20°C . Avoid repeated freeze / thaw cycles.

Background

CBP affinity tag is a useful tag in protein study which can be added to the N or C terminus of proteins of interest through DNA recombinant technology. The tag is derived from muscle myosin light-chain kinase. The tag comprises 26 amino acid residues with the molecular weight of 4 kDa and sequence of KRRWKKNFIAVSAANRFKKISSGAL. CBP tag has the relatively high affinity for calmodulin (CaM). CBP-tagged proteins can be purified from crude cell extracts through CaM affinity resin. CBP Tag antibody is a useful tool in analysis of CBP-tagged proteins.

Product Information

Applications: WB

Suggested starting dilutions are as follows: WB (1:5000).

Isotype: Mouse IgG

Reactivity: All Species Expected

Formulation: Liquid

Concentration: 1 mg/mL

Storage: Store at -20°C . Avoid repeated freeze / thaw cycles.

Storage Buffer: Liquid in PBS, pH 7.4, containing 0.02% Sodium Azide as preservative and 50% Glycerol.

Storage Instructions: Stable for one year at -20°C from date of shipment. For maximum recovery of product, centrifuge the original vial after thawing and prior to removing the cap. Aliquot to avoid repeated freezing and thawing.

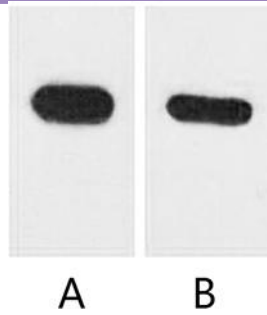


Fig. Western blot analysis of CBP recombinant protein with anti-CBP tag monoclonal Antibody (12H5) at 1:5000 (lane A) and 1:10000 (lane B) dilutions, separately

Note:

The product listed herein is for research use only and is not intended for use in human or clinical diagnosis.