

## Anti-RFP Tag Mouse Mab Antibody (9D1)

Cat #: D-AKE2120

Size: 50  $\mu$ L / 200  $\mu$ L

Storage: Store at  $-20^{\circ}\text{C}$ . Avoid repeated freeze / thaw cycles.

### Background

RFP (Red Fluorescent Protein), cloned from *Discosoma coral* (DsRed, DsRed2 or drFP583), is a protein which exhibits bright red fluorescence when exposed to blue light. It is common research practice for biologists to introduce a gene (or a gene chimera) encoding an engineered fluorescent protein into living cells and subsequently visualize the location and dynamics of the gene product using fluorescence microscopy.

### Product Information

**Applications:** WB

Suggested starting dilutions are as follows: WB (1:5000).

**Isotype:** Mouse IgG

**Reactivity:** All Species Expected

**Formulation:** Liquid

**Concentration:** 1 mg/mL

**Storage:** Store at  $-20^{\circ}\text{C}$ . Avoid repeated freeze / thaw cycles.

**Storage Buffer:** Liquid in PBS, pH 7.4, containing 0.02% Sodium Azide as preservative and 50% Glycerol.

**Storage Instructions:** Stable for one year at  $-20^{\circ}\text{C}$  from date of shipment. For maximum recovery of product, centrifuge the original vial after thawing and prior to removing the cap. Aliquot to avoid repeated freezing and thawing.

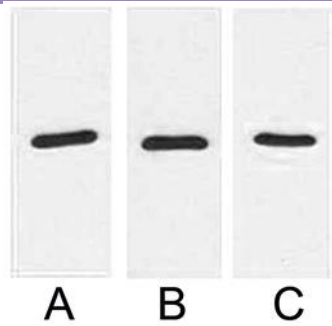


Fig. Western blot analysis of 1 $\mu$ g RFP fusion protein with Anti-RFP monoclonal antibody in 1:2000 (lane A) , 1:3000 (lane B) and 1:5000 (lane C) dilutions.

**Note:**

The product listed herein is for research use only and is not intended for use in human or clinical diagnosis.