

Anti-KT3 Tag Mouse Mab Antibody (14D8)

Cat #: D-AKE2110

Size: 50 μ L / 200 μ L

Storage: Store at -20°C. Avoid repeated freeze / thaw cycles.

Background

The KT3 epitope tag is commonly engineered onto the N- or C- terminus of a protein of interest so that the tagged protein can be analyzed and visualized using immunochemical methods. KT3 epitope tag can be used to monitor expression of the protein products transfected with cDNA constructs. The recognized KT3 epitope represents the amino acid sequence KPPTPPPEPET derived from the Simian Virus 40 (SV40) large T-antigen.

Product Information

Applications: WB

Suggested starting dilutions are as follows: WB (1:5000).

Isotype: Mouse IgG

Reactivity: All Species Expected

Formulation: Liquid

Concentration: 1 mg/mL

Storage: Store at -20°C. Avoid repeated freeze / thaw cycles.

Storage Buffer: Liquid in PBS, pH 7.4, containing 0.02% Sodium Azide as preservative and 50% Glycerol.

Storage Instructions: Stable for one year at -20°C from date of shipment. For maximum recovery of product, centrifuge the original vial after thawing and prior to removing the cap. Aliquot to avoid repeated freezing and thawing.

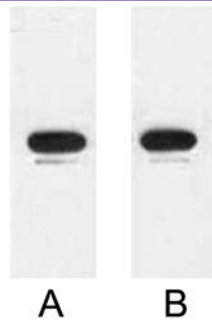


Fig. Western blot analysis of 1ug KT3 fusion protein with Anti-KT3 monoclonal antibody in 1:3000 (lane A) and 1:5000 (lane B) dilutions.

Note:

The product listed herein is for research use only and is not intended for use in human or clinical diagnosis.