

Anti-HSV Tag Mouse Mab Antibody (16T2)

Cat #: D-AKE2100

Size: 50 μ L / 200 μ L

Storage: Store at -20°C . Avoid repeated freeze / thaw cycles.

Background

The HSV (herpes simplex virus) epitope tag is frequently engineered onto the N- or C- terminus of a protein of interest so that the tagged protein can be analyzed and visualized using immunochemical methods. The recognized HSV peptide epitope represents the amino acid sequence QPELAPEDPED. HSV Tag antibody can recognize C-terminal, internal, and N-terminal HSV-tagged proteins.

Product Information

Applications: WB

Suggested starting dilutions are as follows: WB (1:5000).

Isotype: Mouse IgG

Reactivity: All Species Expected

Formulation: Liquid

Concentration: 1 mg/mL

Storage: Store at -20°C . Avoid repeated freeze / thaw cycles.

Storage Buffer: Liquid in PBS, pH 7.4, containing 0.02% Sodium Azide as preservative and 50% Glycerol.

Storage Instructions: Stable for one year at -20°C from date of shipment. For maximum recovery of product, centrifuge the original vial after thawing and prior to removing the cap. Aliquot to avoid repeated freezing and thawing.

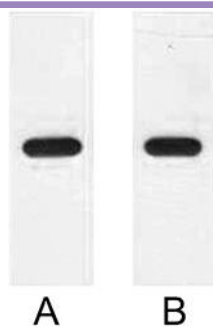


Fig. Western blot analysis of 2 μ g E2 fusion protein with Anti-E2 monoclonal antibody in 1:2000 (lane A) and 1:5000 (lane B) dilutions.

Note:

The product listed herein is for research use only and is not intended for use in human or clinical diagnosis.