

Anti-E2 Tag Mouse Mab Antibody (12T4)

Cat #: D-AKE2090

Size: 50 μ L / 200 μ L

Storage: Store at -20°C . Avoid repeated freeze / thaw cycles.

Background

The E2 Tag is a peptide which is derived from the Bovine Pappillomavirus type-1 transactivator protein E2 and consists of 10 amino acids (SSTSSDFRDR). The detection of E2 tagged proteins is based on the binding of mouse monoclonal antibodies specific to the tagged recombinant protein. E2 Tag antibody can recognize C-terminal, internal, and N-terminal E2 tagged proteins.

Product Information

Applications: WB

Suggested starting dilutions are as follows: WB (1:5000).

Isotype: Mouse IgG

Reactivity: All Species Expected

Formulation: Liquid

Concentration: 1 mg/mL

Storage: Store at -20°C . Avoid repeated freeze / thaw cycles.

Storage Buffer: Liquid in PBS, pH 7.4, containing 0.02% Sodium Azide as preservative and 50% Glycerol.

Storage Instructions: Stable for one year at -20°C from date of shipment. For maximum recovery of product, centrifuge the original vial after thawing and prior to removing the cap. Aliquot to avoid repeated freezing and thawing.

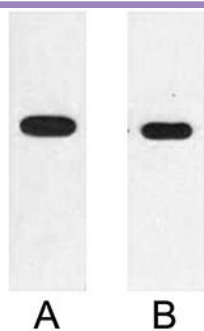


Fig. Western blot analysis of 2µg E2 fusion protein with Anti-E2 monoclonal antibody in 1:2000 (lane A) and 1:5000 (lane B) dilutions

Note:

The product listed herein is for research use only and is not intended for use in human or clinical diagnosis.