

Anti-MBP Tag Mouse Mab Antibody (9Y5)

Cat #: D-AKE2070

Size: 50 μ L / 200 μ L

Storage: Store at -20°C . Avoid repeated freeze / thaw cycles.

Background

Maltose Binding Protein, also called MBP, is a member of the maltose/maltodextrin system of E.coli which is accountable for the uptake and efficient catabolism of maltodextrins. Maltose binding protein is a useful affinity tag that can increase the expression level and solubility of the MBP tagged protein. It promotes proper folding of the fusion protein, and it can be also used to prevent an insoluble form (inclusion bodies)

Product Information

Applications: WB

Suggested starting dilutions are as follows: WB (1:5000)

Isotype: Mouse IgG

Reactivity: Mammals, Bacteria

Formulation: Liquid

Concentration: 1 mg/ml

Storage: Store at -20°C . Avoid repeated freeze / thaw cycles.

Storage Buffer: Liquid in PBS, pH 7.4, containing 0.02% Sodium Azide as preservative and 50% Glycerol.

Storage Instructions: Stable for one year at -20°C from date of shipment. For maximum recovery of product, centrifuge the original vial after thawing and prior to removing the cap. Aliquot to avoid repeated freezing and thawing.

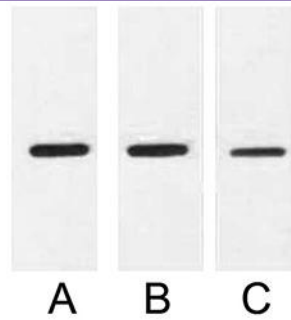


Fig. Western blot analysis of 0.5ug MBP fusion protein with Anti-MBP Tag Mouse Monoclonal Antibody (9Y5) in 1:2000 (lane A), 1:3000 (lane B) and 1:5000 (lane C) dilutions.

Note:

The product listed herein is for research use only and is not intended for use in human or clinical diagnosis.