

## Anti-HA Tag Rabbit Pab Antibody

Cat #: D-AKE2041

Size: 50  $\mu$ L / 200  $\mu$ L

Storage: Store at  $-20^{\circ}\text{C}$ . Avoid repeated freeze / thaw cycles.

### Background

Human influenza hemagglutinin (HA) is a surface glycoprotein required for the infectivity of the human virus. The HA tag is derived from the HA-molecule corresponding to amino acids 98-106 has been extensively used as a general epitope tag in expression vectors. Many recombinant proteins have been engineered to express the HA tag, which does not appear to interfere with the bioactivity or the biodistribution of the recombinant protein.

### Product Information

**Applications:** WB

Suggested starting dilutions are as follows: WB (1:5000)

**Isotype:** Rabbit IgG

**Reactivity:** Mammals, Bacteria

**Formulation:** Liquid

**Concentration:** 1 mg/mL

**Storage:** Store at  $-20^{\circ}\text{C}$ . Avoid repeated freeze / thaw cycles.

**Storage Buffer:** Liquid in PBS, pH 7.4, containing 0.02% Sodium Azide as preservative and 50% Glycerol.

**Storage Instructions:** Stable for one year at  $-20^{\circ}\text{C}$  from date of shipment. For maximum recovery of product, centrifuge the original vial after thawing and prior to removing the cap. Aliquot to avoid repeated freezing and thawing.

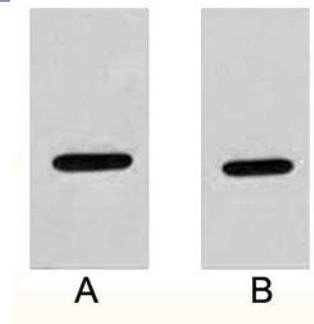


Fig. Western blot analysis of 2ug HA fusion protein with Anti-HA rabbit polyclonal antibody in 1:2000 (lane A) and 1:5000 (lane B) dilutions

**Note:**

The product listed herein is for research use only and is not intended for use in human or clinical diagnosis.