

## Anti-GFP Tag Rabbit Pab Antibody

Cat #: D-AKE2021

Size: 50  $\mu$ L / 200  $\mu$ L

Storage: Store at  $-20^{\circ}\text{C}$ . Avoid repeated freeze / thaw cycles.

### Background

The green fluorescent protein (GFP) is a protein composed of 238 amino acid residues (26.9kD) that exhibits bright green fluorescence when exposed to light in the blue to ultraviolet range. Although many other marine organisms have similar green fluorescent proteins, GFP traditionally refers to the protein first isolated from the jellyfish. The GFP has a major excitation peak at a wavelength of 395 nm and a minor one at 475 nm. Its emission peak is at 509 nm, which is in the lower green portion of the visible spectrum.

### Product Information

**Applications:** WB, IF

Suggested starting dilutions are as follows: WB (1:5000), IF(1:500).

**Isotype:** Rabbit IgG

**Reactivity:** Mammals, Bacteria

**Formulation:** Liquid

**Concentration:** 1 mg/mL

**Storage:** Store at  $-20^{\circ}\text{C}$ . Avoid repeated freeze / thaw cycles.

**Storage Buffer:** Liquid in PBS, pH 7.4, containing 0.02% Sodium Azide as preservative and 50% Glycerol.

**Storage Instructions:** Stable for one year at  $-20^{\circ}\text{C}$  from date of shipment. For maximum recovery of product, centrifuge the original vial after thawing and prior to removing the cap. Aliquot to avoid repeated freezing and thawing.

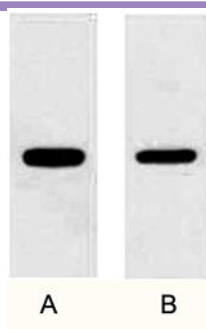


Fig. Western blot analysis of 1 $\mu$ g GFP fusion protein with Anti-GFP rabbit polyclonal antibody in 1:2000 (lane A) and 1:5000 (lane B) dilutions.

**Note:**

The product listed herein is for research use only and is not intended for use in human or clinical diagnosis.