

Anti-Rubisco (Large Chain) Mab Antibody(9Y6)

Cat #: D-AKE1110

Size: 50 µL / 200 µL

Storage: Store at -20°C. Avoid repeated freeze / thaw cycles.

Background

Rubisco (Ribulose-1,5-bisphosphate carboxylase/oxygenase) catalyzes the rate-limiting step of CO₂ fixation in photosynthetic organisms. It is demonstrably homologous from purple bacteria to flowering plants and consists of two protein subunits, each present in 8 copies. In plants and green algae, the large subunit (~55 kDa) is coded by the chloroplast *rbcl* gene, and the small subunit (15 kDa) is coded by a family of nuclear *rbcS* genes.

Product Information

Applications: WB

Suggested starting dilutions are as follows: WB (1:2000-1:5000).

Isotype: Mouse IgG

Reactivity: Arabidopsis, Brassica napus, Rice, Soybean

Formulation: Liquid

Concentration: 1 mg/mL

Storage: Store at -20°C. Avoid repeated freeze / thaw cycles.

Storage Buffer: Liquid in PBS, pH 7.4, containing 0.02% Sodium Azide as preservative and 50% Glycerol.

Storage Instructions: Stable for one year at -20°C from date of shipment. For maximum recovery of product, centrifuge the original vial after thawing and prior to removing the cap. Aliquot to avoid repeated freezing and thawing.

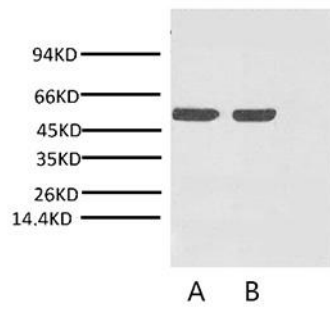


Fig. Western blot analysis of Arabidopsis with Rubisco (Large Chain) monoclonal antibody at 1:2000 (lane A) and 1:5000 (lane B) dilutions, separately.

Note:

The product listed herein is for research use only and is not intended for use in human or clinical diagnosis.