

## Anti-Lamin B1 Mab Antibody(15T1)

Cat #: D-AKE1090

Size: 50  $\mu$ L / 200  $\mu$ L

Storage: Store at -20°C. Avoid repeated freeze / thaw cycles.

### Background

LMNB1 encodes one of the two B-type lamin proteins and is a component of the nuclear lamina. A duplication of LMNB1 is associated with autosomal dominant adult-onset leukodystrophy (ADLD). Alternative splicing results in multiple transcript variants.

### Product Information

**Applications:** WB, IHC, IF, IP

Suggested starting dilutions are as follows: WB (1:2000-1:5000), IHC (1:50-1:300), IF (1:200), IP (1:200).

**Isotype:** Mouse IgG

**Reactivity:** Human, Mouse, Rat

**Formulation:** Liquid

**Concentration:** 1 mg/mL

**Storage:** Store at -20°C. Avoid repeated freeze / thaw cycles.

**Storage Buffer:** Liquid in PBS, pH 7.4, containing 0.02% Sodium Azide as preservative and 50% Glycerol.

**Storage Instructions:** Stable for one year at -20°C from date of shipment. For maximum recovery of product, centrifuge the original vial after thawing and prior to removing the cap. Aliquot to avoid repeated freezing and thawing.

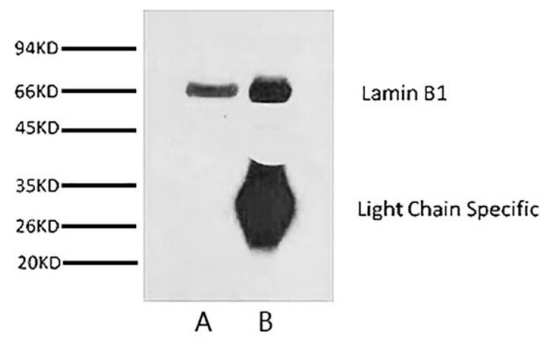


Fig.1. Immunoprecipitation analysis of Lamin B1 at 1:200 dilution as below: Input is Mouse brain tissue lysate (lane A) and IP product (lane B).

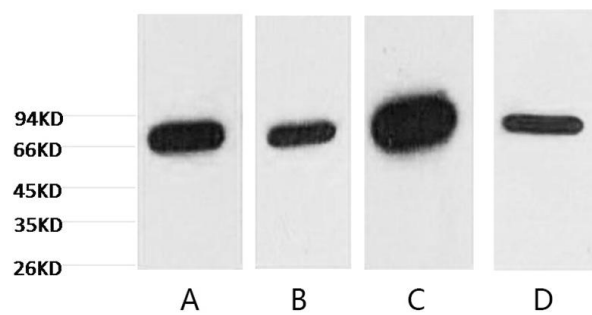


Fig.2. Western blot analysis of Lamin B1 expression in HepG2 cell (lane A), 293T cell (lane B), Mouse brain tissue (lane C) and Rat brain tissue (lane D) at 1:5000 diluted, separately.

**Note:**

The product listed herein is for research use only and is not intended for use in human or clinical diagnosis.