

Anti- β -Tubulin Mouse Mab Antibody(3G6)

Cat #: D-AKE1030

Size: 50 μ L / 200 μ L

Storage: Store at -20°C . Avoid repeated freeze / thaw cycles.

Background

Tubulin is one of several members of a small family of globular proteins. The most common members of the tubulin family are α -tubulin and β -tubulin, the proteins that make up microtubules. Each has a molecular weight of approximately 55 kDa. Antibodies against β -Tubulin are useful as loading controls for Western Blotting. However it should be noted that levels of β -Tubulin may not be stable in certain cells, such as adipose tissue.

Product Information

Applications: WB, IHC-p, IF

Suggested starting dilutions are as follows: WB (1:10000), IHC-P (1:400), IF (1:400).

Isotype: Mouse IgG1

Reactivity: Human, Mouse, Rat, Monkey, Dog, Chicken, Rabbit, Sheep, Yeast, Hamster, cotton bollworm

Formulation: Liquid solution

Concentration: 1 mg/mL

Storage: Store at -20°C . Avoid repeated freeze / thaw cycles.

Storage Buffer: Liquid in PBS, pH 7.4, containing 0.02% Sodium Azide as preservative and 50% Glycerol.

Storage Instructions: Stable for one year at -20°C from date of shipment. For maximum recovery of product, centrifuge the original vial after thawing and prior to removing the cap. Aliquot to avoid repeated freezing and thawing.

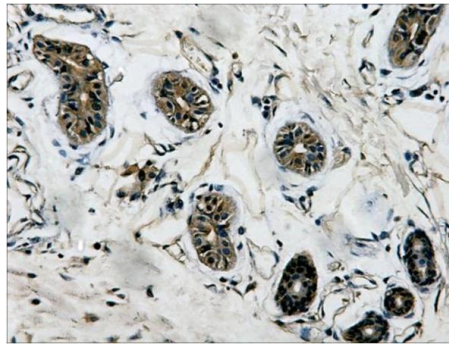


Fig.1. Immunohistochemistry staining (1:400) of β -Tubulin in mouse colon tissue.

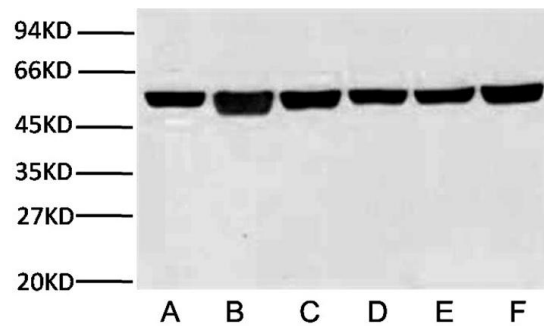


Fig.2. Western blot analysis (1:10000) of β -Tubulin expression in Rat brain (lane A), A549 cell (lane B), Mouse brain (lane C), Chicken lung (lane D) and Rabbit testis (lane E) and Sheep muscle (lane F) with Anti- β -Tubulin Mouse Monoclonal Antibody (3G6).

Note:

The product listed herein is for research use only and is not intended for use in human or clinical diagnosis.