

Anti-GAPDH Mouse Mab Antibody(2B5)

Cat #: D-AKE1020

Size: 50 µL / 200 µL

Storage: Store at -20°C. Avoid repeated freeze / thaw cycles.

Background

Glyceraldehyde 3-phosphate dehydrogenase (abbreviated as GAPDH or less commonly as G3PDH) is an enzyme of 37kDa that catalyzes the sixth step of glycolysis and thus serves to break down glucose for energy and carbon molecules. In addition to this long established metabolic function, GAPDH has recently been implicated in several non-metabolic processes, including transcription activation, initiation of apoptosis ER to Golgi vesicle shuttling, and fast axonal, or axoplasmic transport.

Product Information

Applications: WB, IHC-p, IF

Suggested starting dilutions are as follows: WB (1:10,000-1:100,000), IHC-P (1:400), IF (1:400).

Isotype: Mouse IgG1

Reactivity: Human, Mouse, Rat, Monkey, Dog, Chicken, Rabbit, Pig, Sheep, Yeast, Hamster

Formulation: Liquid solution

Concentration: 1 mg/mL

Storage: Store at -20°C. Avoid repeated freeze / thaw cycles.

Storage Buffer: Liquid in PBS, pH 7.4, containing 0.02% Sodium Azide as preservative and 50% Glycerol.

Storage Instructions: Stable for one year at -20°C from date of shipment. For maximum recovery of product, centrifuge the original vial after thawing and prior to removing the cap. Aliquot to avoid repeated freezing and thawing.

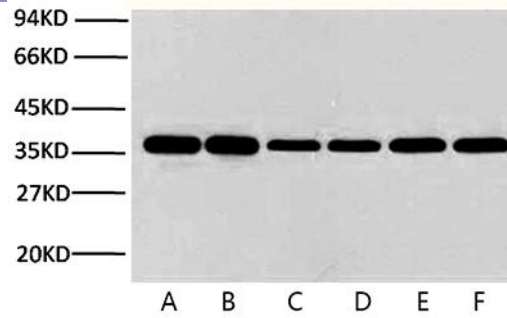


Fig. Western blot analysis (1:10000) of GAPDH expression in Rat brain (lane A), Hela cell lysate (lane B), Mouse brain (lane C), Rabbit muscle (lane D), Chicken muscle (lane E) and Pig heart (lane F) with Anti-GAPDH Mouse Monoclonal Antibody (2B5).

Note:

The product listed herein is for research use only and is not intended for use in human or clinical diagnosis.