

Anti- β -Actin Rabbit Pab Antibody

Cat #: D-AKE1011

Size: 50 μ L / 200 μ L

Storage: Store at -20°C . Avoid repeated freeze / thaw cycles.

Background

ACTB encodes one of six different actin proteins. Actins are highly conserved proteins that are involved in cell motility, structure, and integrity. This actin is a major constituent of the contractile apparatus and one of the two nonmuscle cytoskeletal actins.

Product Information

Applications: WB, IHC-P

Suggested starting dilutions are as follows: WB (1:1000), IHC-P (1:200).

Isotype: Rabbit IgG

Reactivity: Human, Mouse, Rat, Rabbit, Chicken, Monkey, Sheep, Xneous

Formulation: Liquid

Concentration: 1 mg/mL

Storage: Store at -20°C . Avoid repeated freeze / thaw cycles.

Storage Buffer: Liquid in PBS, pH 7.4, containing 0.02% Sodium Azide as preservative and 50% Glycerol.

Storage Instructions: Stable for one year at -20°C from date of shipment. For maximum recovery of product, centrifuge the original vial after thawing and prior to removing the cap. Aliquot to avoid repeated freezing and thawing.

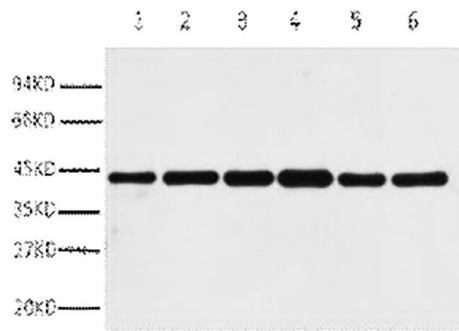


Fig.1. Western blot analysis of HepG2 (1), Rat liver (2), Mouse kidney (3), Rabbit testis (4), Sheep lung (5), 293T (6), diluted at 1:5000. Secondary antibody was diluted at 1:20000.

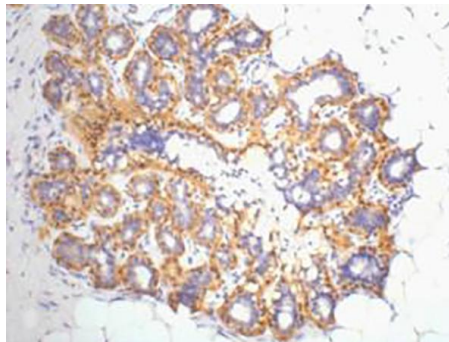


Fig.2. IHC staining of Human ovary tissue, diluted at 1:200.

Note:

The product listed herein is for research use only and is not intended for use in human or clinical diagnosis.