

## Anti- $\beta$ -Actin Mouse Mab Antibody(1C7)

Cat #: D-AKE1010

Size: 50  $\mu$ L / 200  $\mu$ L

Storage: Store at -20°C. Avoid repeated freeze / thaw cycles.

### Background

$\beta$ -Actin (gene name ACTB), a ubiquitous eukaryotic protein, is the major component of the cytoskeleton. At least six isoforms are known in mammals. Actins are highly conserved proteins that are involved in cell motility, structure and integrity.  $\beta$ -actin is a major constituent of the contractile apparatus, which is usually used as a loading control, for among others, the integrity of cells, protein degradation, in PCR and Western blotting. Its molecular weight is approximately 43 kDa.

### Product Information

**Applications:** WB, IHC-p, IF

Suggested starting dilutions are as follows: WB (1:10000), IHC-P (1:400), IF (1:100-1:400).

**Isotype:** Mouse IgG1

**Reactivity:** Human, Mouse, Rat, Monkey, Dog, Chicken, Rabbit, Hamster

**Formulation:** Liquid solution

**Concentration:** 1 mg/mL

**Storage:** Store at -20°C. Avoid repeated freeze / thaw cycles.

**Storage Buffer:** Liquid in PBS, pH 7.4, containing 0.02% Sodium Azide as preservative and 50% Glycerol.

**Storage Instructions:** Stable for one year at -20°C from date of shipment. For maximum recovery of product, centrifuge the original vial after thawing and prior to removing the cap. Aliquot to avoid repeated freezing and thawing.

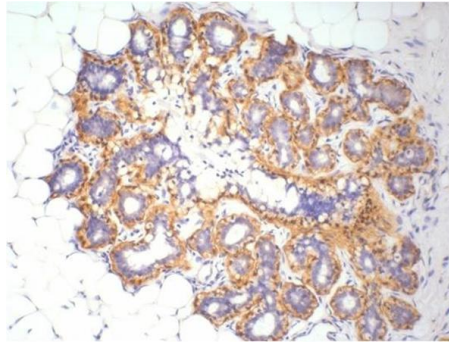


Fig.1. Immunohistochemistry staining (1:400) of  $\beta$ -Actin in Human ovary tissue.

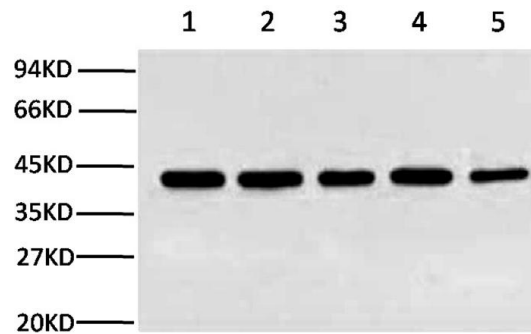


Fig.2. Western blot analysis (1:10,000) of  $\beta$ -Actin expression in Rat brain (lane 1), HeLa cell lysate (lane 2), Mouse brain (lane 3), Chicken lung (lane 4) and Rabbit testis (lane 5) with Anti- $\beta$ -Actin mouse monoclonal antibody (1C7).

**Note:**

The product listed herein is for research use only and is not intended for use in human or clinical diagnosis.