

IHCAb™ PMEL (BGT255) Mouse mAb

Cat #: B-IMW6984

Size: 100 µL

Storage: Store at -20°C. Avoid repeated freeze / thaw cycles.

Background

This gene encodes a melanocyte-specific type I transmembrane glycoprotein. The encoded protein is enriched in melanosomes, which are the melanin-producing organelles in melanocytes, and plays an essential role in the structural organization of premelanosomes. This protein is involved in generating internal matrix fibers that define the transition from Stage I to Stage II melanosomes. This protein undergoes a complex pattern of posttranslational processing and modification that is essential to the proper functioning of the protein. A secreted form of this protein that is released by proteolytic ectodomain shedding may be used as a melanoma-specific serum marker. Alternate splicing results in multiple transcript variants.

Product Information

Applications/Dilution: IHC-p 1:200-400, WB 1:200-1000

Isotype/Source: Mouse, Monoclonal/IgG1, Kappa

Specificity: The antibody can specifically recognize human PMEL protein

Subcellular Location: Cytoplasmic

Expression: Skin/ Melanoma

Formulation: PBS, pH7.2, 0.03% Porcolin 300, containing stabilizing protein

Storage: Store at -15°C to -25°C

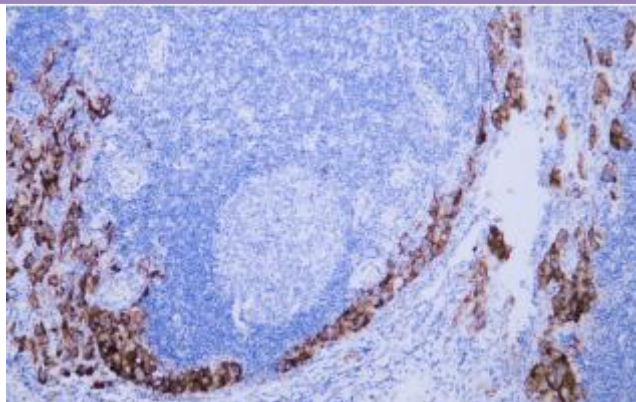


Fig.1. Human malignant mesothelioma tissue was stained with Anti-PMEL Antibody

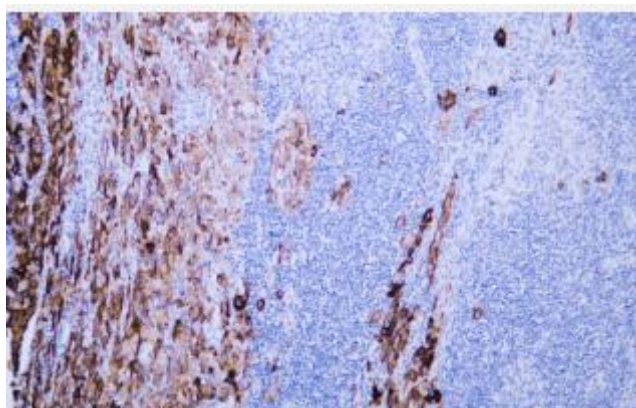


Fig.2. Human malignant mesothelioma tissue was stained with Anti-PMEL Antibody

Note:

The product listed herein is for research use only and is not intended for use in human or clinical diagnosis.