

## IHCAb™ Glypican-3 (GPC3) mouse mAb (BGT180)

Cat #: B-IMW6955

Size: 100 µL

Storage: Store at -20°C. Avoid repeated freeze / thaw cycles.

### Background

Cell surface heparan sulfate proteoglycans are composed of a membrane-associated protein core substituted with a variable number of heparan sulfate chains. Members of the glypican-related integral membrane proteoglycan family (GRIPS) contain a core protein anchored to the cytoplasmic membrane via a glycosyl phosphatidylinositol linkage. These proteins may play a role in the control of cell division and growth regulation. The protein encoded by this gene can bind to and inhibit the dipeptidyl peptidase activity of CD26, and it can induce apoptosis in certain cell types. Deletion mutations in this gene are associated with Simpson-Golabi-Behmel syndrome, also known as Simpson dysmorphia syndrome. Alternative splicing results in multiple transcript variants.

### Product Information

**Applications/Dilution:** IHC-p 1:100-500, WB 1:200-1000, IF 1:100-500

**Isotype/Source:** Mouse, Monoclonal/IgG1, Kappa

**Specificity:** The antibody can specifically recognize human Glypican-3 protein

**Subcellular Location:** Cell membrane ; Lipid-anchor, GPI-anchor ; Extracellular side

**Expression:** Highly expressed in lung, liver and kidney

**Formulation:** Liquid in PBS containing 50% glycerol, 0.5% BSA and 0.144% sodium azide

**Storage:** Store at -15°C to -25°C

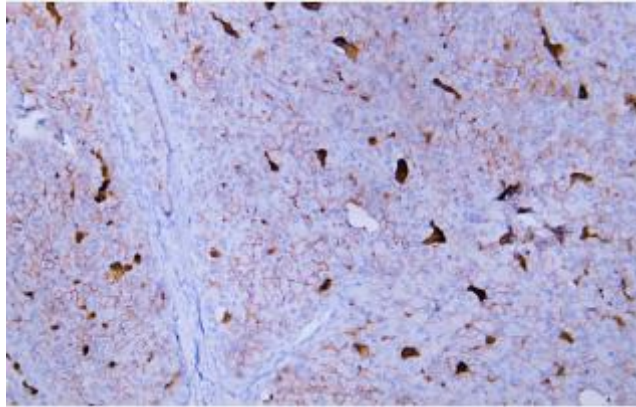


Fig.1. Human hepatocellular carcinoma tissue was stained with Anti-Glypican-3 Antibody

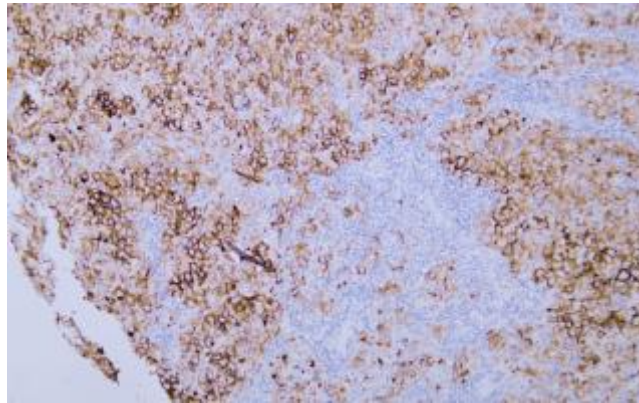


Fig.2. Human hepatocellular carcinoma tissue was stained with Anti-Glypican-3 Antibody

**Note:**

The product listed herein is for research use only and is not intended for use in human or clinical diagnosis.