

IHCAb™ Glypican-3 (GPC3) mouse mAb (BGT068)

Cat #: B-IMW6954

Size: 100 µL

Storage: Store at -20°C. Avoid repeated freeze / thaw cycles.

Background

Cell surface heparan sulfate proteoglycans are composed of a membrane-associated protein core substituted with a variable number of heparan sulfate chains. Members of the glypican-related integral membrane proteoglycan family (GRIPS) contain a core protein anchored to the cytoplasmic membrane via a glycosyl phosphatidylinositol linkage. These proteins may play a role in the control of cell division and growth regulation. The protein encoded by this gene can bind to and inhibit the dipeptidyl peptidase activity of CD26, and it can induce apoptosis in certain cell types. Deletion mutations in this gene are associated with Simpson-Golabi-Behmel syndrome, also known as Simpson dysmorphia syndrome. Alternative splicing results in multiple transcript variants.

Product Information

Applications/Dilution: IHC-p 1:100-500, WB 1:200-1000, IF 1:100-500

Isotype/Source: Mouse, Monoclonal/IgG1, Kappa

Specificity: The antibody can specifically recognize human Glypican-3 protein

Subcellular Location: Cell membrane ; Lipid-anchor, GPI-anchor ; Extracellular side

Expression: Highly expressed in lung, liver and kidney

Formulation: Liquid in PBS containing 50% glycerol, 0.5% BSA and 0.143% sodium azide

Storage: Store at -15°C to -25°C

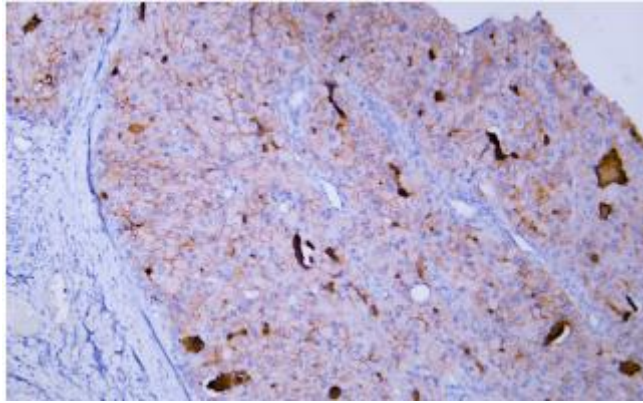


Fig.1. Human hepatocellular carcinoma tissue was stained with Anti-Glypican-3 Antibody

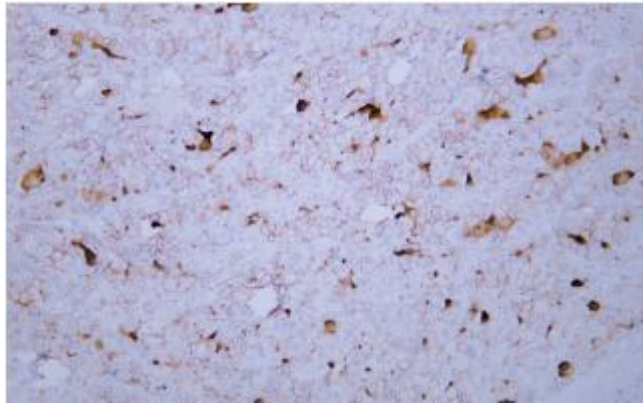


Fig.2. Human hepatocellular carcinoma tissue was stained with Anti-Glypican-3 Antibody

Note:

The product listed herein is for research use only and is not intended for use in human or clinical diagnosis.