

IHCAb™ TCL1 mouse mAb (BGT234)

Cat #: B-IMW6911

Size: 100 µL

Storage: Store at -20°C. Avoid repeated freeze / thaw cycles.

Background

Overexpression of the TCL1 gene in humans has been implicated in the development of mature T cell leukemia, in which chromosomal rearrangements bring the TCL1 gene in close proximity to the T-cell antigen receptor (TCR)-alpha (MIM 186880) or TCR-beta (MIM 186930) regulatory elements (summarized by Virgilio et al., 1998 [PubMed 9520462]). In normal T cells TCL1 is expressed in CD4-/CD8- cells, but not in cells at later stages of differentiation. TCL1 functions as a coactivator of the cell survival kinase AKT (MIM 164730).

Product Information

Applications/Dilution: IHC-p 1:100-500, IF 1:100-500

Isotype/Source: Mouse, Monoclonal/IgG2a, Kappa

Specificity: The antibody can specifically recognize human TCL1 protein

Subcellular Location: Cytoplasm . Nucleus . Microsome . Endoplasmic reticulum . Microsomal fraction.

Expression: Restricted in the T-cell lineage to immature thymocytes and activated peripheral lymphocytes. Preferentially expressed early in T- and B-lymphocyte differentiation.

Formulation: Liquid in PBS containing 50% glycerol, 0.5% BSA and 0.153% sodium azide

Storage: Store at -15°C to -25°C

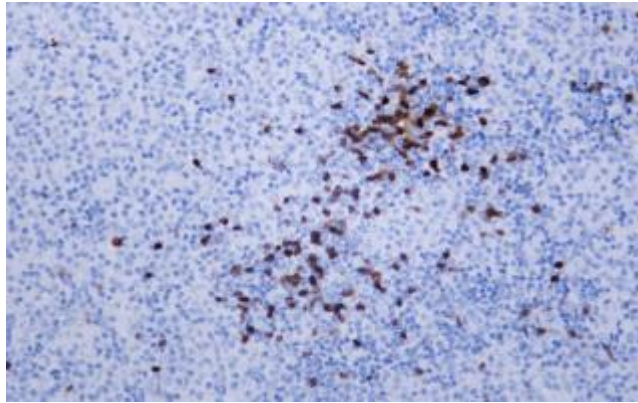


Fig.1. Human diffuse large B-cell lymphoma tissue was stained with Anti-TCL1 Antibody

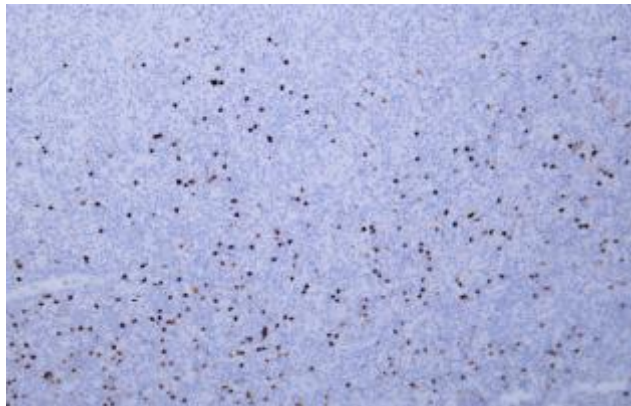


Fig.2. Human diffuse large B-cell lymphoma tissue was stained with Anti-TCL1 Antibody

Note:

The product listed herein is for research use only and is not intended for use in human or clinical diagnosis.