

IHCAb™ Stathmin mouse mAb (BGT266)

Cat #: B-IMW6910

Size: 100 µL

Storage: Store at -20°C. Avoid repeated freeze / thaw cycles.

Background

This gene belongs to the stathmin family of genes. It encodes a ubiquitous cytosolic phosphoprotein proposed to function as an intracellular relay integrating regulatory signals of the cellular environment. The encoded protein is involved in the regulation of the microtubule filament system by destabilizing microtubules. It prevents assembly and promotes disassembly of microtubules. Multiple transcript variants encoding different isoforms have been found for this gene.

Product Information

Applications/Dilution: IHC-p 1:100-500, WB 1:200-1000, IF 1:100-500

Isotype/Source: Mouse, Monoclonal/IgG2a, Kappa

Specificity: The antibody can specifically recognize human Stathmin protein. In western blotting of HepG2 cell lysate, the antibody can label a 17KDa band corresponding to Stathmin.

Subcellular Location: Cytoplasm, cytoskeleton

Expression: Ubiquitous. Expression is strongest in fetal and adult brain, spinal cord, and cerebellum, followed by thymus, bone marrow, testis, and fetal liver. Expression is intermediate in colon, ovary, placenta, uterus, and trachea, and is readily detected at substantially lower levels in all other tissues examined. Lowest expression is found in adult liver. Present in much greater abundance in cells from patients with acute leukemia of different subtypes than in normal peripheral blood lymphocytes, non-leukemic proliferating lymphoid cells, bone marrow cells, or cells from patients with chronic lymphoid or myeloid leukemia

Formulation: Liquid in PBS containing 50% glycerol, 0.5% BSA and 0.112% sodium azide

Storage: Store at -15°C to -25°C

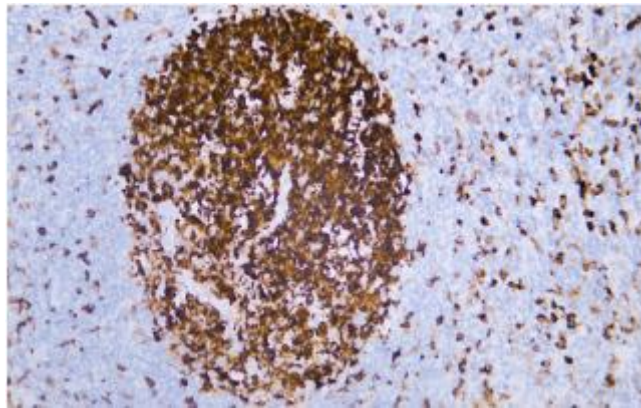


Fig. Human tonsil tissue was stained with Anti-Stathmin Antibody

Note:

The product listed herein is for research use only and is not intended for use in human or clinical diagnosis.