

## IHCAb™ S100P mouse mAb (BGT229)

Cat #: B-IMW6909

Size: 100 µL

Storage: Store at -20°C. Avoid repeated freeze / thaw cycles.

### Background

The protein encoded by this gene is a member of the S100 family of proteins containing 2 EF-hand calcium-binding motifs. S100 proteins are localized in the cytoplasm and/or nucleus of a wide range of cells, and involved in the regulation of a number of cellular processes such as cell cycle progression and differentiation. S100 genes include at least 13 members which are located as a cluster on chromosome 1q21; however, this gene is located at 4p16. This protein, in addition to binding Ca<sup>2+</sup>, also binds Zn<sup>2+</sup> and Mg<sup>2+</sup>. This protein may play a role in the etiology of prostate cancer.

### Product Information

**Applications/Dilution:** IHC-p 1:100-500, IF 1:100-500

**Isotype/Source:** Mouse, Monoclonal/IgG1, Kappa

**Specificity:** The antibody can specifically recognize human S100P protein.

**Subcellular Location:** Nucleus. Cytoplasm. Cell projection, microvillus membrane. Colocalizes with S100BP in the nucleus. Colocalizes with EZR in the microvilli in a calcium-dependent manner

**Expression:** Detected in all of the tissues except brain, testis and small intestine, expression level is higher in placenta, heart, lung, skeletal muscle, spleen and leukocyte. Up-regulated in various pancreatic ductal adenocarcinomas and pancreatic intraepithelial neoplasias

**Formulation:** Liquid in PBS containing 50% glycerol, 0.5% BSA and 0.124% sodium azide

**Storage:** Store at -15°C to -25°C

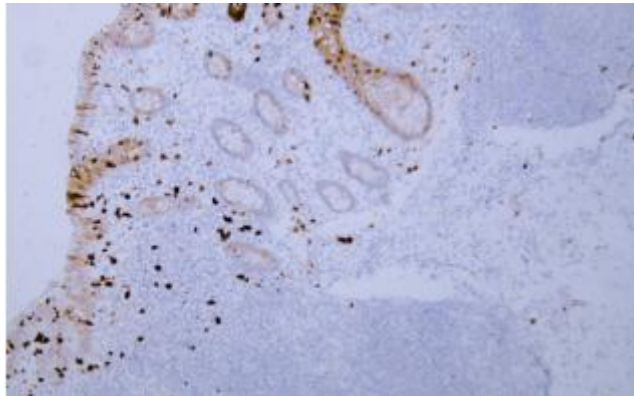


Fig.1. Human appendix tissue was stained with Anti-S100P Antibody

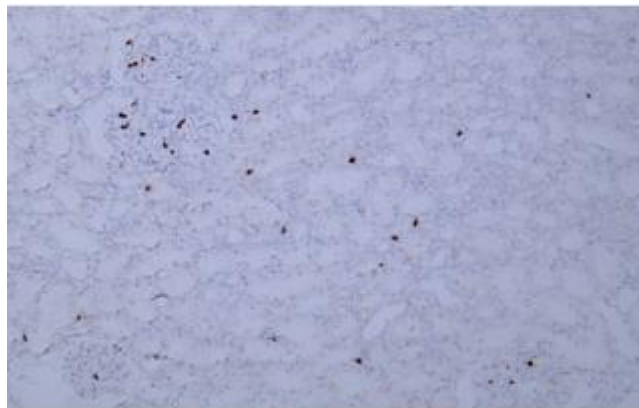


Fig.2. Human kidney tissue was stained with Anti-S100P Antibody

**Note:**

The product listed herein is for research use only and is not intended for use in human or clinical diagnosis.