

IHCAb™ pS2 mouse mAb (BGT265)

Cat #: B-IMW6907

Size: 100 µL

Storage: Store at -20°C. Avoid repeated freeze / thaw cycles.

Background

Members of the trefoil family are characterized by having at least one copy of the trefoil motif, a 40-amino acid domain that contains three conserved disulfides. They are stable secretory proteins expressed in gastrointestinal mucosa. Their functions are not defined, but they may protect the mucosa from insults, stabilize the mucus layer, and affect healing of the epithelium. This gene, which is expressed in the gastric mucosa, has also been studied because of its expression in human tumors. This gene and two other related trefoil family member genes are found in a cluster on chromosome 21.

Product Information

Applications/Dilution: IHC-p 1:100-500, WB 1:200-1000, IF 1:100-500

Isotype/Source: Mouse, Monoclonal/IgG1, Kappa

Specificity: The antibody can specifically recognize human pS2 protein.

Subcellular Location: Secreted

Expression: Found in stomach, with highest levels in the upper gastric mucosal cells (at protein level). Detected in goblet cells of the small and large intestine and rectum, small submucosal glands in the esophagus, mucous acini of the sublingual gland, submucosal glands of the trachea, and epithelial cells lining the exocrine pancreatic ducts but not in the remainder of the pancreas (at protein level). Scattered expression is detected in the epithelial cells of the gallbladder and submucosal glands of the vagina, and weak expression is observed in the bronchial goblet cells of the pseudostratified epithelia in the respiratory system (at protein level). Detected in urine (at protein level). Strongly expressed in breast cancer but at low levels in normal mammary tissue. It is regulated by estrogen in

Formulation: Liquid in PBS containing 50% glycerol, 0.5% BSA and 0.36% sodium azide

Storage: Store at -15°C to -25°C

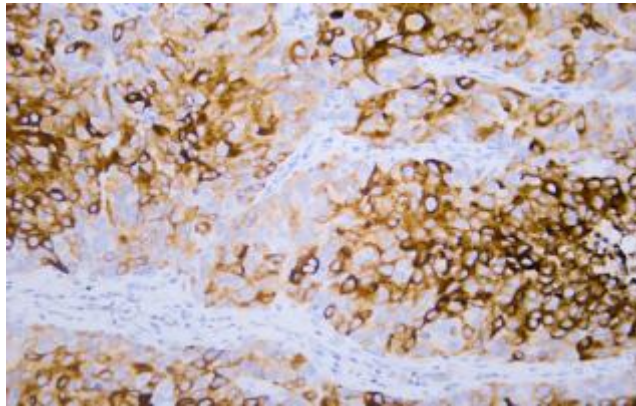


Fig. Human breast carcinoma tissue was stained with Anti-pS2 Antibody. Secondary Antibody was Biogradetech POLY™ Polymer HRP Goat Anti-Rabbit/Mouse IgG(H+L) Secondary Antibody (B-IMWRS11).

Note:

The product listed herein is for research use only and is not intended for use in human or clinical diagnosis.