

## IHCAb™ PSA mouse mAb (BGT114)

Cat #: B-IMW6905

Size: 100 µL

Storage: Store at -20°C. Avoid repeated freeze / thaw cycles.

### Background

Kallikreins are a subgroup of serine proteases having diverse physiological functions. Growing evidence suggests that many kallikreins are implicated in carcinogenesis and some have potential as novel cancer and other disease biomarkers. This gene is one of the fifteen kallikrein subfamily members located in a cluster on chromosome 19. Its protein product is a protease present in seminal plasma. It is thought to function normally in the liquefaction of seminal coagulum, presumably by hydrolysis of the high molecular mass seminal vesicle protein. Serum level of this protein, called PSA in the clinical setting, is useful in the diagnosis and monitoring of prostatic carcinoma. Alternate splicing of this gene generates several transcript variants encoding different isoforms.

### Product Information

**Applications/Dilution:** IHC-p 1:100-500, WB 1:200-1000, IF 1:100-500

**Isotype/Source:** Mouse, Monoclonal/IgG2b, Kappa

**Specificity:** The antibody can specifically recognize human PSA protein

**Subcellular Location:** Secreted

**Expression:** Cytoplasmic

**Formulation:** Liquid in PBS containing 50% glycerol, 0.5% BSA and 0.59% sodium azide

**Storage:** Store at -15°C to -25°C

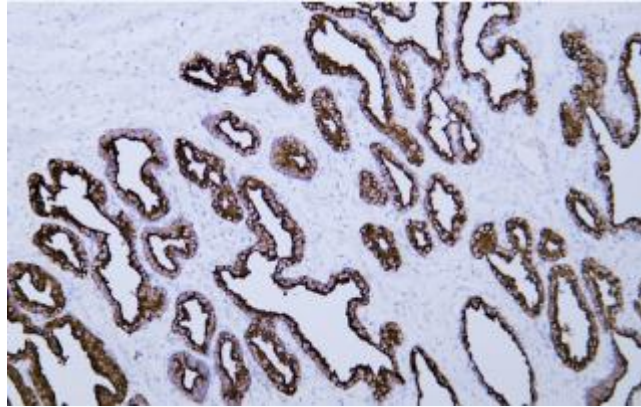


Fig.1. Human prostate tissue was stained with Anti-Prostate-Specific Antigen Antibody. Secondary Antibody was Biogradetech POLY™ Polymer HRP Goat Anti-Rabbit/Mouse IgG(H+L) Secondary Antibody (B-IMWRS11)

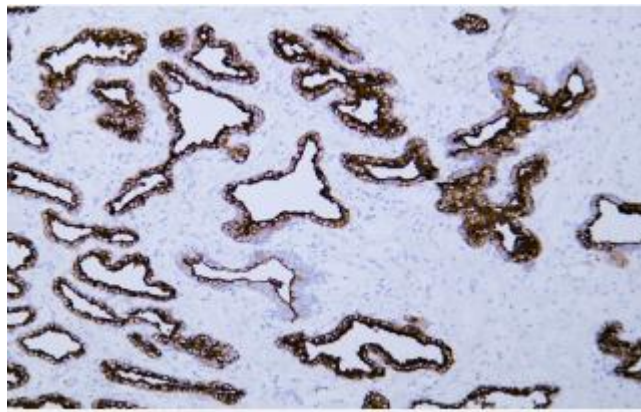


Fig.2. Human prostate tissue was stained with Anti-Prostate-Specific Antigen Antibody. Secondary Antibody was Biogradetech POLY™ Polymer HRP Goat Anti-Rabbit/Mouse IgG(H+L) Secondary Antibody (B-IMWRS11)

**Note:**

The product listed herein is for research use only and is not intended for use in human or clinical diagnosis.