

IHCab™ MUC4 mouse mAb (BGT199)

Cat #: B-IMW6890

Size: 100 µL

Storage: Store at -20°C. Avoid repeated freeze / thaw cycles.

Background

The major constituents of mucus, the viscous secretion that covers epithelial surfaces such as those in the trachea, colon, and cervix, are highly glycosylated proteins called mucins. These glycoproteins play important roles in the protection of the epithelial cells and have been implicated in epithelial renewal and differentiation. This gene encodes an integral membrane glycoprotein found on the cell surface, although secreted isoforms may exist. At least two dozen transcript variants of this gene have been found, although for many of them the full-length transcript has not been determined or they are found only in tumor tissues. This gene contains a region in the coding sequence which has a variable number (>100) of 48 nt tandem repeats.

Product Information

Applications/Dilution: IHC-p 1:100-500, WB 1:200-1000, IF 1:100-500

Isotype/Source: Mouse, Monoclonal/IgG2a, Kappa

Specificity: The antibody can specifically recognize human MUC4 protein, and has no cross reaction with MUC2, MUC5AC, MUC6 proteins

Subcellular Location: [Mucin-4 beta chain]: Cell membrane ; Single-pass membrane protein . Isoforms lacking the Cys-rich region, EGF-like domains and transmembrane region are secreted. Secretion occurs by splicing or proteolytic processing. .; [Mucin-4 alpha chain]: Cell membrane . Secreted . Forms a complex with Mucin-4 beta chain at the cell membrane. .; [Isoform 3]: Cell membrane ; Single-pass membrane protein .; [Isoform 11]: Secreted .; [Isoform 15]: Secreted .; [Isoform 17]: Cell membrane ; Single-pass membrane protein

Expression: Expressed in the thymus, thyroid, lung, trachea, esophagus, stomach, small intestine, colon, testis, prostate, ovary, uterus, placenta, and mammary and salivary glands. Expressed in carcinomas arising from some of these

epithelia, such as lung cancers, squamous cell carcinomas of the upper aerodigestive tract, mammary carcinomas, biliary tract, colon, and cervix cancers. Minimally or not expressed in the normal pancreas or chronic pancreatitis, but is highly expressed in pancreatic tumors and pancreatic tumor cell lines

Formulation: Liquid in PBS containing 50% glycerol, 0.5% BSA and 0.173% sodium azide

Storage: Store at -15°C to -25°C

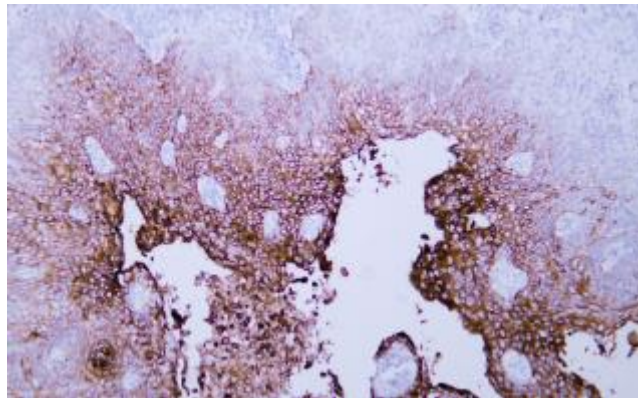


Fig. Human cervical squamous cell carcinoma tissue was stained with Anti-MUC4 Antibody.

Note:

The product listed herein is for research use only and is not intended for use in human or clinical diagnosis.