

IHCAb™ MAGE-C1 mouse mAb (BGT339)

Cat #: B-IMW6887

Size: 100 µL

Storage: Store at -20°C. Avoid repeated freeze / thaw cycles.

Background

This gene is a member of the melanoma antigen gene (MAGE) family. The proteins of this family are tumor-specific antigens that can be recognized by autologous cytolytic T lymphocytes. This protein contains a large number of unique short repetitive sequences in front of the MAGE-homologous sequence, and therefore is about 800 aa longer than the other MAGE proteins.

Product Information

Applications/Dilution: IHC-p 1:100-500, WB 1:200-1000, IF 1:100-500

Isotype/Source: Mouse, Monoclonal/IgG1, Kappa

Specificity: The antibody can specifically recognize human MAGE-C1 protein. In western blotting of K562 cell lysate, the antibody can label a 190KDa band corresponding to MAGE-C1

Subcellular Location: Testis

Expression: Expressed in testis and in tumors of a wide variety of histologic types

Formulation: Liquid in PBS containing 50% glycerol, 0.5% BSA and 0.03% sodium azide

Storage: Store at -15°C to -25°C

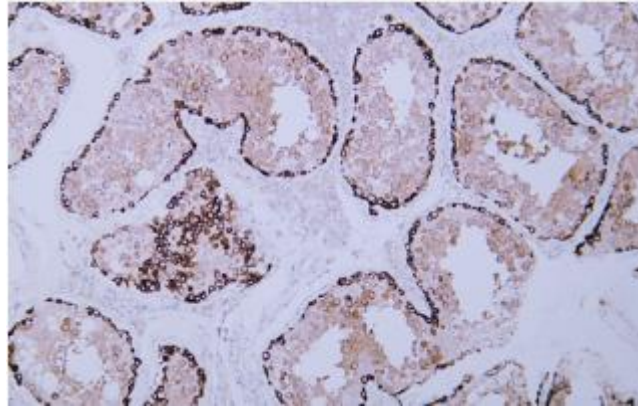


Fig. Human testis tissue was stained with Anti-MAGE-C1 Antibody.

Note:

The product listed herein is for research use only and is not intended for use in human or clinical diagnosis.