

IHCAb™ HSP60 mouse mAb (BGT186)

Cat #: B-IMW6884

Size: 100 µL

Storage: Store at -20°C. Avoid repeated freeze / thaw cycles.

Background

This gene encodes a member of the chaperonin family. The encoded mitochondrial protein may function as a signaling molecule in the innate immune system. This protein is essential for the folding and assembly of newly imported proteins in the mitochondria. This gene is adjacent to a related family member and the region between the 2 genes functions as a bidirectional promoter. Several pseudogenes have been associated with this gene. Two transcript variants encoding the same protein have been identified for this gene. Mutations associated with this gene cause autosomal recessive spastic paraplegia 13.

Product Information

Applications/Dilution: IHC-p 1:100-500, WB 1:200-1000, IF 1:100-500

Isotype/Source: Mouse, Monoclonal/IgG2b, Kappa

Specificity: The antibody can specifically recognize human HSP60 protein. In western blotting of K562, A431, MCF7 cell lysates, the antibody can label a 60KDa band corresponding to HSP60

Subcellular Location: Mitochondrion matrix

Expression: Cytoplasmic

Formulation: Liquid in PBS containing 50% glycerol, 0.5% BSA and 0.80% sodium azide

Storage: Store at -15°C to -25°C

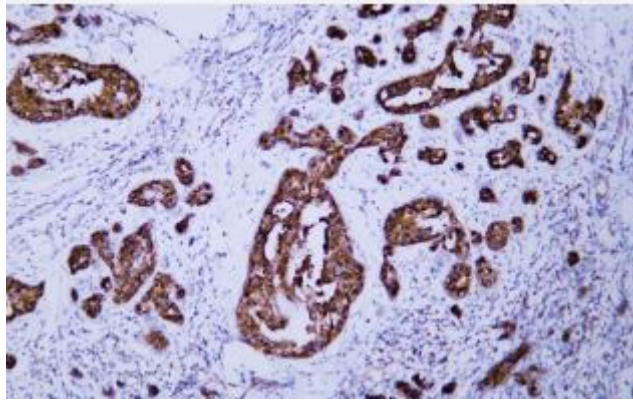


Fig.1. Human breast carcinoma tissue was stained with Anti-HSP60 Antibody

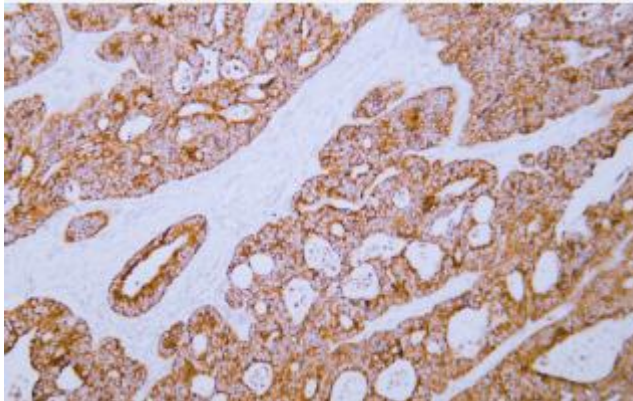


Fig.2. Human colon carcinoma tissue was stained with Anti-HSP60 Antibody

Note:

The product listed herein is for research use only and is not intended for use in human or clinical diagnosis.