

IHCAb™ Gross cystic disease fluid protein-15 (GCDFP-15) mouse mAb (BGT330)

Cat #: B-IMW6879

Size: 100 µL

Storage: Store at -20°C. Avoid repeated freeze / thaw cycles.

Product Information

Applications/Dilution: IHC-p 1:100-500, WB 1:200-1000, IF 1:100-500

Isotype/Source: Mouse, Monoclonal/IgG1, Kappa

Specificity: The antibody can specifically recognize human GCDFP-15 protein

Subcellular Location: Secreted

Expression: Expressed in pathological conditions of the mammary gland and in several exocrine tissues, such as the lacrimal, salivary, and sweat glands

Formulation: Liquid in PBS containing 50% glycerol, 0.5% BSA and 0.87% sodium azide

Storage: Store at -15°C to -25°C

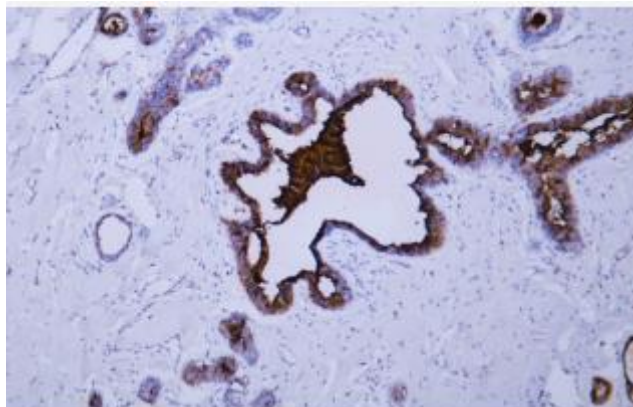


Fig. Human breast carcinoma tissue was stained with Anti-GCDFP-15 Antibody.

Note:

The product listed herein is for research use only and is not intended for use in human or clinical diagnosis.