

IHCAb™ Glycophorin A mouse mAb (BGT179)

Cat #: B-IMW6878

Size: 100 µL

Storage: Store at -20°C. Avoid repeated freeze / thaw cycles.

Background

Glycophorins A (GYPA) and B (GYPB) are major sialoglycoproteins of the human erythrocyte membrane which bear the antigenic determinants for the MN and Ss blood groups. In addition to the M or N and S or s antigens that commonly occur in all populations, about 40 related variant phenotypes have been identified. These variants include all the variants of the Miltenberger complex and several isoforms of Sta, as well as Dantu, Sat, He, Mg, and deletion variants Ena, S-s-U- and Mk. Most of the variants are the result of gene recombinations between GYPA and GYPB

Product Information

Applications/Dilution: IHC-p 1:100-500, IF 1:100-500

Isotype/Source: Mouse, Monoclonal/IgG1, Kappa

Specificity: The antibody can specifically recognize human Glycophorin A protein

Subcellular Location: Cell membrane ; Single-pass type I membrane protein . Appears to be colocalized with SLC4A1

Expression: Cytoplasmic

Formulation: Liquid in PBS containing 50% glycerol, 0.5% BSA and 0.34% sodium azide

Storage: Store at -15°C to -25°C

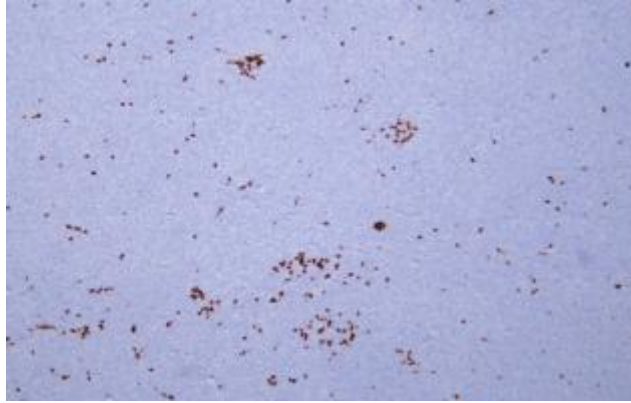


Fig.1. Human acute myeloid leukemia tissue was stained with Anti-Glycophorin A Antibody

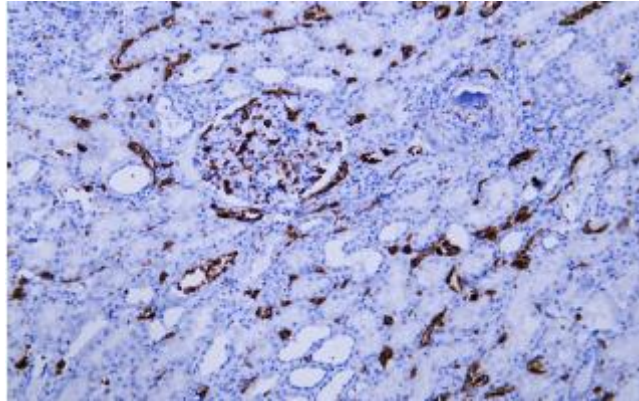


Fig.2. Human kidney tissue was stained with Anti-Glycophorin A Antibody

Note:

The product listed herein is for research use only and is not intended for use in human or clinical diagnosis.