

IHCAb™ FSH mouse mAb (BGT172)

Cat #: B-IMW6874

Size: 100 µL

Storage: Store at -20°C. Avoid repeated freeze / thaw cycles.

Background

follicle stimulating hormone beta subunit(FSHB) Homo sapiens The pituitary glycoprotein hormone family includes follicle-stimulating hormone, luteinizing hormone, chorionic gonadotropin, and thyroid-stimulating hormone. All of these glycoproteins consist of an identical alpha subunit and a hormone-specific beta subunit. This gene encodes the beta subunit of follicle-stimulating hormone. In conjunction with luteinizing hormone, follicle-stimulating hormone induces egg and sperm production. Alternative splicing results in two transcript variants encoding the same protein

Product Information

Applications/Dilution: IHC-p 1:100-500, IF 1:100-500

Isotype/Source: Mouse, Monoclonal/IgG2a, Kappa

Specificity: The antibody can specifically recognize human FS H protein, and shows no cross reaction with LH, CG and TSH proteins.

Subcellular Location: Secreted . Efficient secretion requires dimerization with CGA

Expression: Cytoplasmic

Formulation: Liquid in PBS containing 50% glycerol, 0.5% BSA and 0.18% sodium azide

Storage: Store at -15°C to -25°C

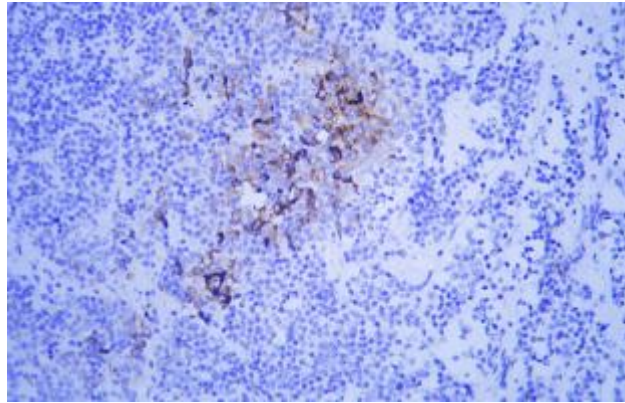


Fig. Human pituitary adenoma tissue was stained with Anti-FSH Antibody

Note:

The product listed herein is for research use only and is not intended for use in human or clinical diagnosis.