

## IHCAb™ CK4 mouse mAb (BGT061)

Cat #: B-IMW6869

Size: 100 µL

Storage: Store at -20°C. Avoid repeated freeze / thaw cycles.

### Background

keratin 4(KRT4) Homo sapiens The protein encoded by this gene is a member of the keratin gene family. The type II cytokeratins consist of basic or neutral proteins which are arranged in pairs of heterotypic keratin chains coexpressed during differentiation of simple and stratified epithelial tissues. This type II cytokeratin is specifically expressed in differentiated layers of the mucosal and esophageal epithelia with family member KRT13. Mutations in these genes have been associated with White Sponge Nevus, characterized by oral, esophageal, and anal leukoplakia. The type II cytokeratins are clustered in a region of chromosome 12q12-q13

### Product Information

**Applications/Dilution:** IHC-p 1:100-500, WB 1:200-1000, IF 1:100-500

**Isotype/Source:** Mouse, Monoclonal/IgG2b, Kappa

**Specificity:** The antibody can specifically recognize human CK4 protein, and shows no cross reaction with CK5, 6, 7, 8, 14, 15, 17, 20.

**Subcellular Location:** Esophageal squamous carcinoma

**Expression:** Detected in the suprabasal layer of the stratified epithelium of the esophagus, exocervix, vagina, mouth and lingual mucosa, and in cells and cell clusters in the mucosa and serous gland ducts of the esophageal submucosa (at protein level). Expressed widely in the exocervix and esophageal epithelium, with lowest levels detected in the basal cell layer

**Formulation:** Liquid in PBS containing 50% glycerol, 0.5% BSA and 0.119% sodium azide

**Storage:** Store at -15°C to -25°C

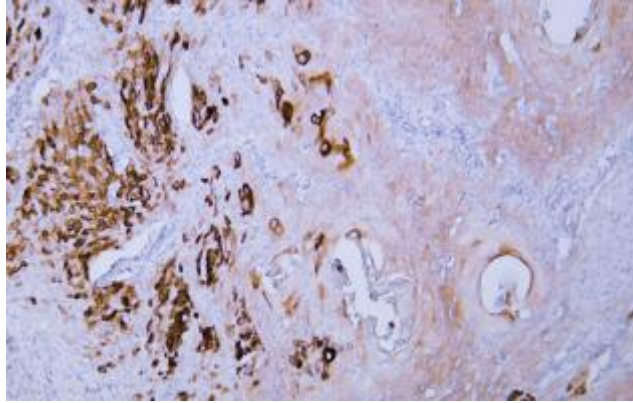


Fig.1. Human cervical squamous cell carcinoma tissue was stained with Anti-Cytokeratin 4 Antibody

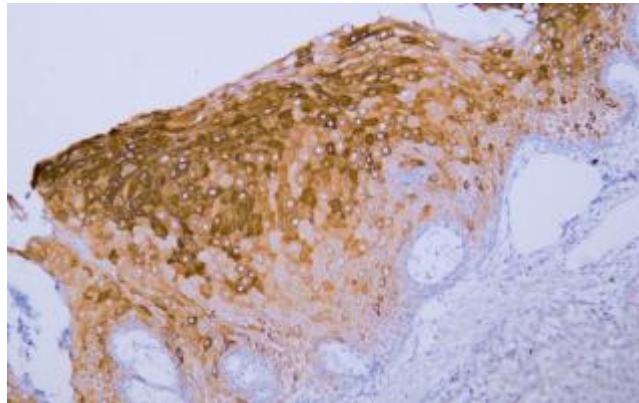


Fig.2. Human esophageal squamous cell carcinoma tissue was stained with Anti-Cytokeratin 4 Antibody

**Note:**

The product listed herein is for research use only and is not intended for use in human or clinical diagnosis.