

IHCAb™ CK20 mouse mAb (BGT044)

Cat #: B-IMW6866

Size: 100 µL

Storage: Store at -20°C. Avoid repeated freeze / thaw cycles.

Background

The protein encoded by this gene is a member of the keratin family. The keratins are intermediate filament proteins responsible for the structural integrity of epithelial cells and are subdivided into cytokeratins and hair keratins. The type I cytokeratins consist of acidic proteins which are arranged in pairs of heterotypic keratin chains. This cytokeratin is a major cellular protein of mature enterocytes and goblet cells and is specifically expressed in the gastric and intestinal mucosa. The type I cytokeratin genes are clustered in a region of chromosome 17q12-q21

Product Information

Applications/Dilution: IHC-p 1:100-500, WB 1:200-1000, IF 1:100-500

Isotype/Source: Mouse, Monoclonal/IgG2b, Kappa

Specificity: The antibody can specifically recognize human CK20 protein, and shows no cross reaction with CK1, 5, 6, 7, 8, 13, 14, 15, 17, 18.

Subcellular Location: Cytoplasm

Expression: Expressed predominantly in the intestinal epithelium. Expressed in luminal cells of colonic mucosa. Also expressed in the Merkel cells of keratinized oral mucosa; specifically at the tips of some rete ridges of the gingival mucosa, in the basal layer of the palatal mucosa and in the taste buds of lingual mucosa

Formulation: Liquid in PBS containing 50% glycerol, 0.5% BSA and 0.136% sodium azide

Storage: Store at -15°C to -25°C

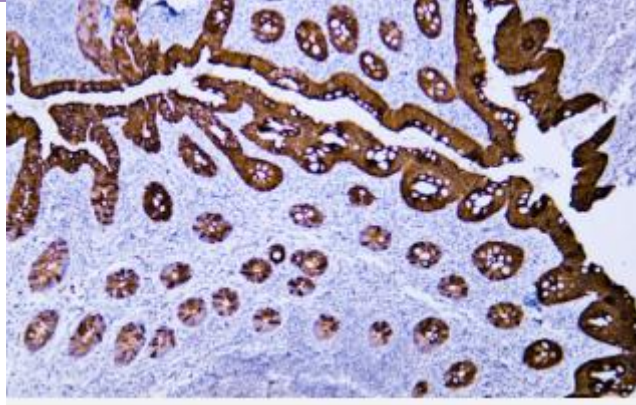


Fig.1. Human appendix tissue was stained with Anti-Cytokeratin 20 Antibody

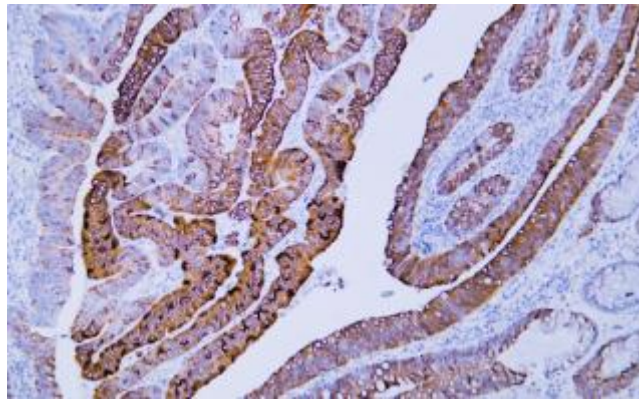


Fig.2. Human colon carcinoma tissue was stained with Anti-Cytokeratin 20 Antibody

Note:

The product listed herein is for research use only and is not intended for use in human or clinical diagnosis.