

## IHCAb™ CK18 mouse mAb (BGT054)

Cat #: B-IMW6862

Size: 100 µL

Storage: Store at -20°C. Avoid repeated freeze / thaw cycles.

### Background

KRT18 encodes the type I intermediate filament chain keratin 18. Keratin 18, together with its filament partner keratin 8, are perhaps the most commonly found members of the intermediate filament gene family. They are expressed in single layer epithelial tissues of the body. Mutations in this gene have been linked to cryptogenic cirrhosis. Two transcript variants encoding the same protein have been found for this gene.

### Product Information

**Applications/Dilution:** IHC-p 1:100-500, WB 1:200-1000, IF 1:100-500

**Isotype/Source:** Mouse, Monoclonal/IgG2b, Kappa

**Specificity:** The antibody can specifically recognize human CK18 protein, and shows no cross reaction with CK1, 5, 6, 7, 8, 10, 13, 14, 15, 19, 20. In western blotting of HeLa and MCF7 cell lysates, the antibody c

**Subcellular Location:** Cytoplasm, perinuclear region. Nucleus, nucleolus

**Expression:** Expressed in colon, placenta, liver and very weakly in exocervix. Increased expression observed in lymph nodes of breast carcinoma

**Formulation:** Liquid in PBS containing 50% glycerol, 0.5% BSA and 0.46% sodium azide

**Storage:** Store at -15°C to -25°C

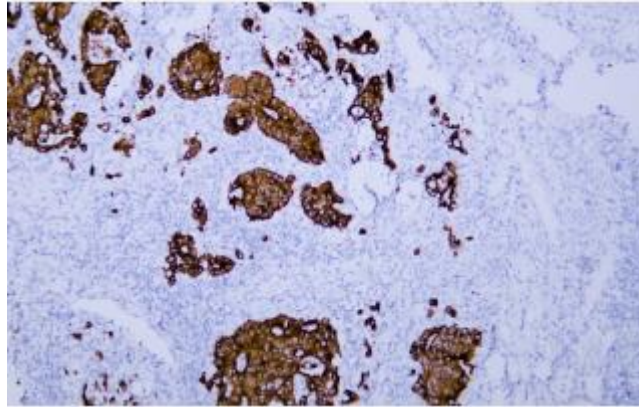


Fig.1. Human colon carcinoma tissue was stained with Anti-Cytokeratin 18 Antibody

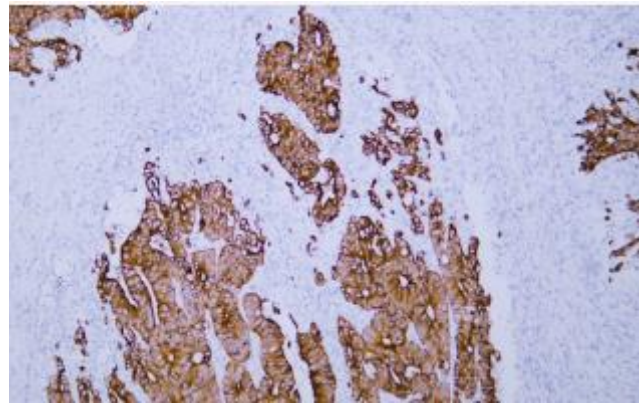


Fig.2. Human colon carcinoma tissue was stained with Anti-Cytokeratin 18 Antibody

**Note:**

The product listed herein is for research use only and is not intended for use in human or clinical diagnosis.