

## IHCAb™ CK15 mouse mAb (BGT058)

Cat #: B-IMW6859

Size: 100 µL

Storage: Store at -20°C. Avoid repeated freeze / thaw cycles.

### Background

The protein encoded by this gene is a member of the keratin gene family. The keratins are intermediate filament proteins responsible for the structural integrity of epithelial cells and are subdivided into cytokeratins and hair keratins. Most of the type I cytokeratins consist of acidic proteins which are arranged in pairs of heterotypic keratin chains and are clustered in a region on chromosome 17q21.2.

### Product Information

**Applications/Dilution:** IHC-p 1:100-500, WB 1:200-1000, IF 1:100-500

**Isotype/Source:** Mouse, Monoclonal/IgG1, Kappa

**Specificity:** The antibody can specifically recognize human CK15 protein. In immunohistochemistry on formalin-fixed, paraffin-embedded tissue sections, the antibody specifically labels the squamous epithelial cell

**Subcellular Location:** nucleus, intermediate filament, extracellular exosome

**Expression:** Expressed in a discontinuous manner in the basal cell layer of adult skin epidermis, but continuously in the basal layer of fetal skin epidermis and nail. Also expressed in the outer root sheath above the hair bulb in hair follicle (at protein level). Expressed homogeneously in all cell layers of the esophagus and exocervix, but detected in the basal cell layer only of oral mucosa, skin and in the basal plus the next two layers of the suprabasal epithelium of the palate

**Formulation:** Liquid in PBS containing 50% glycerol, 0.5% BSA and 0.118% sodium azide

**Storage:** Store at -15°C to -25°C

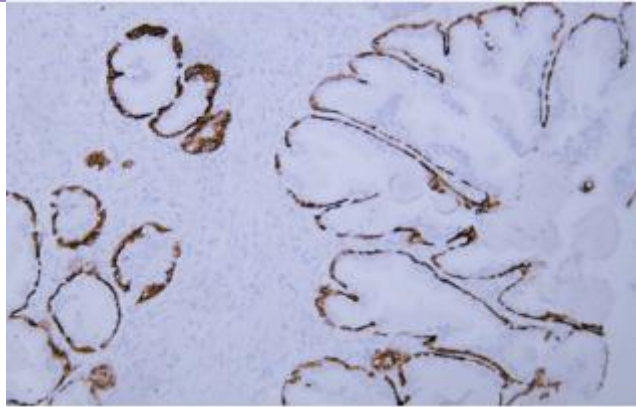


Fig.1. Human prostate tissue was stained with Anti-Cytokeratin 15 Antibody

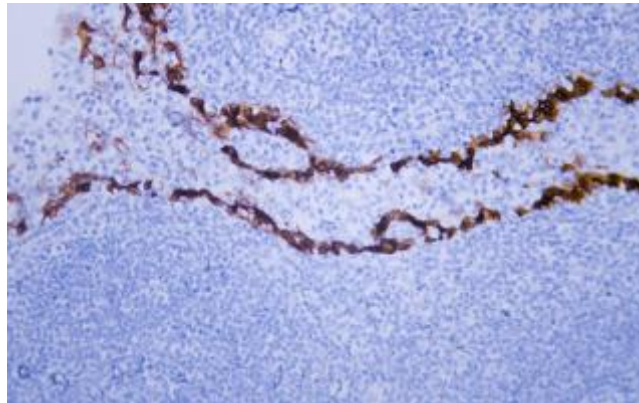


Fig.2. Human tonsil tissue was stained with Anti-Cytokeratin 15 Antibody

**Note:**

The product listed herein is for research use only and is not intended for use in human or clinical diagnosis.