

IHCab™ CK10 mouse mAb (BGT056)

Cat #: B-IMW6857

Size: 100 µL

Storage: Store at -20°C. Avoid repeated freeze / thaw cycles.

Background

This gene encodes a member of the type I (acidic) cytokeratin family, which belongs to the superfamily of intermediate filament (IF) proteins. Keratins are heteropolymeric structural proteins which form the intermediate filament. These filaments, along with actin microfilaments and microtubules, compose the cytoskeleton of epithelial cells. Mutations in this gene are associated with epidermolytic hyperkeratosis. This gene is located within a cluster of keratin family members on chromosome 17q21.

Product Information

Applications/Dilution: IHC-p 1:100-500, IF 1:100-500

Isotype/Source: Mouse, Monoclonal/IgG1, Kappa

Specificity: The antibody can specifically recognize human CK10 protein, and shows no cross reaction with CK4, 5, 6, 7, 8, 14, 15, 18, 19

Subcellular Location: Secreted, extracellular space . Cell surface . Localized on the surface of desquamated nasal epithelial cells (PubMed:12427098). Localized on the surface of lung cell lines (PubMed:19627498)

Expression: Seen in all suprabasal cell layers including stratum corneum. Expressed on the surface of lung cell lines (PubMed:19627498)

Formulation: Liquid in PBS containing 50% glycerol, 0.5% BSA and 0.90% sodium azide

Storage: Store at -15°C to -25°C

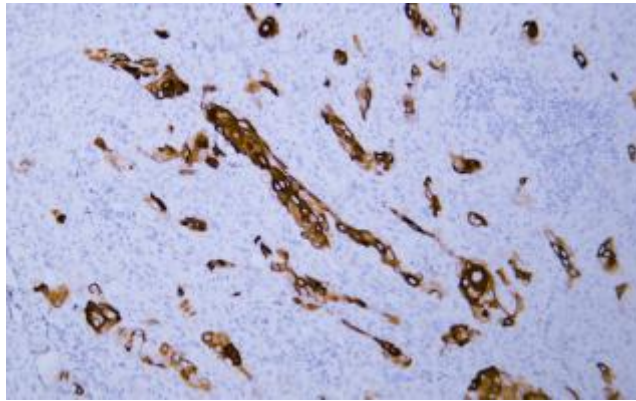


Fig. Human cervix tissue was stained with Anti-Cytokeratin 10 Antibody

Note:

The product listed herein is for research use only and is not intended for use in human or clinical diagnosis.