

IHCAb™ Collagen Type II mouse mAb (BGT501)

Cat #: B-IMW6854

Size: 100 µL

Storage: Store at -20°C. Avoid repeated freeze / thaw cycles.

Background

This gene encodes the alpha-1 chain of type II collagen, a fibrillar collagen found in cartilage and the vitreous humor of the eye. Mutations in this gene are associated with achondrogenesis, chondrodysplasia, early onset familial osteoarthritis, SED congenita, Langer-Saldino achondrogenesis, Kniest dysplasia, Stickler syndrome type I, and spondyloepimetaphyseal dysplasia Strudwick type. In addition, defects in processing chondrocalcin, a calcium binding protein that is the C-propeptide of this collagen molecule, are also associated with chondrodysplasia. There are two transcripts identified for this gene.

Product Information

Applications/Dilution: IHC-p 1:100-500, IF 1:100-500

Isotype/Source: Mouse, Monoclonal/IgG2b, Kappa

Specificity: The antibody can specifically recognize human Collagen Type II protein, collagen types I, III, IV and V do not respond to the antibody

Subcellular Location: Secreted, extracellular space, extracellular matrix

Expression: Isoform 2 is highly expressed in juvenile chondrocyte and low in fetal chondrocyte

Formulation: Liquid in PBS containing 50% glycerol, 0.5% BSA and 0.30% sodium azide

Storage: Store at -15°C to -25°C

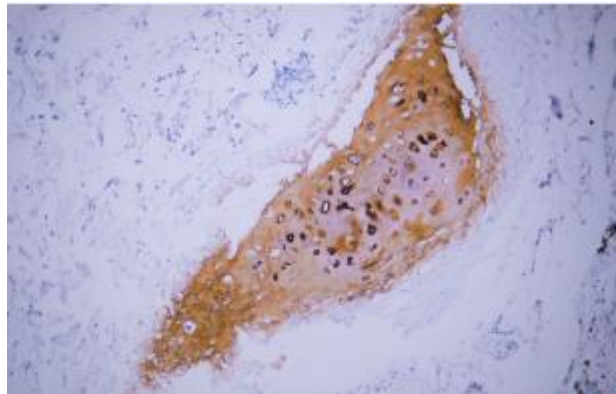


Fig. Human cartilage tissue was stained with Anti-Collagen Type II Antibody.

Note:

The product listed herein is for research use only and is not intended for use in human or clinical diagnosis.