

IHCAb™ CD38 mouse mAb (BGT298)

Cat #: B-IMW6840

Size: 100 µL

Storage: Store at -20°C. Avoid repeated freeze / thaw cycles.

Background

The protein encoded by this gene is a non-lineage-restricted, type II transmembrane glycoprotein that synthesizes and hydrolyzes cyclic adenosine 5'-diphosphate-ribose, an intracellular calcium ion mobilizing messenger. The release of soluble protein and the ability of membrane-bound protein to become internalized indicate both extracellular and intracellular functions for the protein. This protein has an N-terminal cytoplasmic tail, a single membrane-spanning domain, and a C-terminal extracellular region with four N-glycosylation sites. Crystal structure analysis demonstrates that the functional molecule is a dimer, with the central portion containing the catalytic site. It is used as a prognostic marker for patients with chronic lymphocytic leukemia. Alternative splicing results in multiple transcript variants.

Product Information

Applications/Dilution: IHC-p 1:100-500, WB 1:200-1000, IF 1:100-500

Isotype/Source: Mouse, Monoclonal/IgG2b, Kappa

Specificity: The antibody can specifically recognize human CD38 protein

Subcellular Location: Membrane; Single-pass type II membrane protein

Expression: Expressed at high levels in pancreas, liver, kidney, brain, testis, ovary, placenta, malignant lymphoma and neuroblastoma

Formulation: Liquid in PBS containing 50% glycerol, 0.5% BSA and 0.126% sodium azide

Storage: Store at -15°C to -25°C

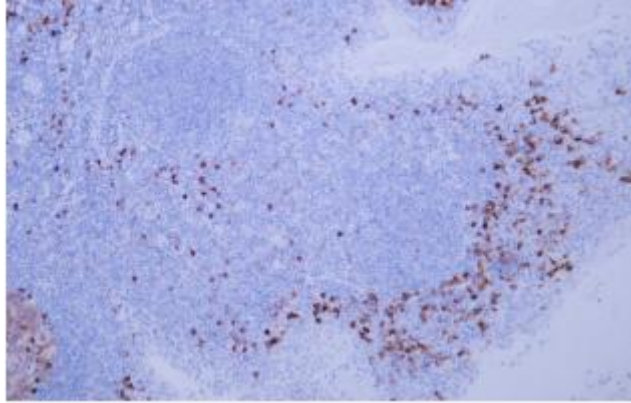


Fig. Human tonsil tissue was stained with Anti-CD38 Antibody. Secondary Antibody was Biogradetech POLY™ Polymer HRP Goat Anti-Rabbit/Mouse IgG(H+L) Secondary Antibody (B-IMWRS11).

Note:

The product listed herein is for research use only and is not intended for use in human or clinical diagnosis.