

## IHCAb™ CD20 mouse mAb (BGT301)

Cat #: B-IMW6834

Size: 100 µL

Storage: Store at -20°C. Avoid repeated freeze / thaw cycles.

### Background

This gene encodes a member of the membrane-spanning 4A gene family. Members of this nascent protein family are characterized by common structural features and similar intron/exon splice boundaries and display unique expression patterns among hematopoietic cells and nonlymphoid tissues. This gene encodes a B-lymphocyte surface molecule which plays a role in the development and differentiation of B-cells into plasma cells. This family member is localized to 11q12, among a cluster of family members. Alternative splicing of this gene results in two transcript variants which encode the same protein.

### Product Information

**Applications/Dilution:** IHC-p 1:100-500, WB 1:200-1000, IF 1:100-500

**Isotype/Source:** Mouse, Monoclonal/IgG2a, Kappa

**Specificity:** The antibody can specifically recognize human CD20 protein

**Subcellular Location:** Cell membrane ; Multi-pass membrane protein . Cell membrane ; Lipid-anchor . Constitutively associated with membrane rafts

**Expression:** Expressed on B-cells

**Formulation:** Liquid in PBS containing 50% glycerol, 0.5% BSA and 0.86% sodium azide

**Storage:** Store at -15°C to -25°C

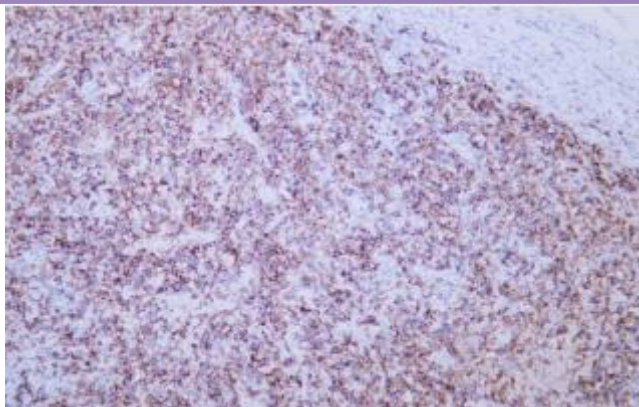


Fig.1. Human diffuse large B-cell lymphoma tissue was stained with Anti-CD20 Antibody

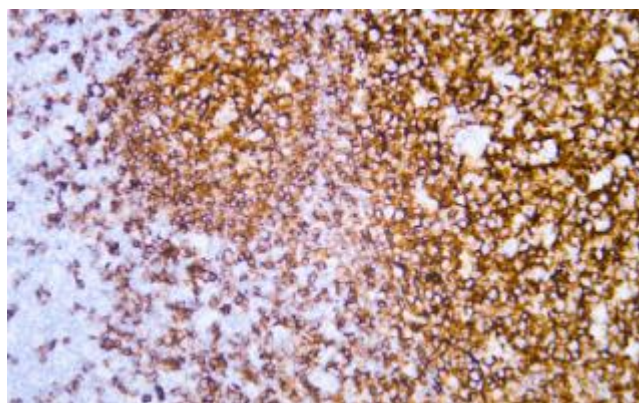


Fig.2. Human tonsil tissue was stained with anti-CD20 antibody

**Note:**

The product listed herein is for research use only and is not intended for use in human or clinical diagnosis.