

IHCAb™ CD20 mouse mAb (BGT065)

Cat #: B-IMW6832

Size: 100 µL

Storage: Store at -20°C. Avoid repeated freeze / thaw cycles.

Background

This gene encodes a member of the membrane-spanning 4A gene family. Members of this nascent protein family are characterized by common structural features and similar intron/exon splice boundaries and display unique expression patterns among hematopoietic cells and nonlymphoid tissues. This gene encodes a B-lymphocyte surface molecule which plays a role in the development and differentiation of B-cells into plasma cells. This family member is localized to 11q12, among a cluster of family members. Alternative splicing of this gene results in two transcript variants which encode the same protein.

Product Information

Applications/Dilution: IHC-p 1:100-500, WB 1:200-1000, IF 1:100-500

Isotype/Source: Mouse, Monoclonal/IgG1, Kappa

Specificity: The antibody can specifically recognize human CD20 protein

Subcellular Location: Cell membrane ; Multi-pass membrane protein . Cell membrane ; Lipid-anchor . Constitutively associated with membrane rafts

Expression: Expressed on B-cells

Formulation: Liquid in PBS containing 50% glycerol, 0.5% BSA and 0.84% sodium azide

Storage: Store at -15°C to -25°C

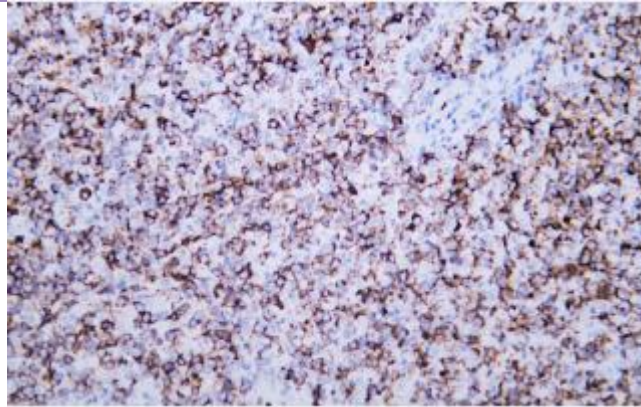


Fig.1. Human diffuse large B-cell lymphoma tissue was stained with Anti-CD20 Antibody

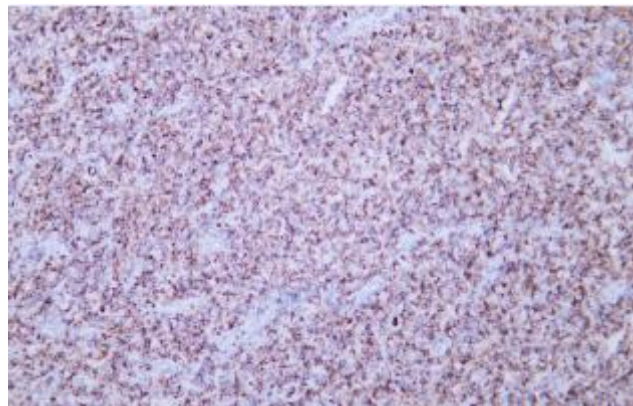


Fig.2. Human diffuse large B-cell lymphoma tissue was stained with Anti-CD20 Antibody

Note:

The product listed herein is for research use only and is not intended for use in human or clinical diagnosis.