

## IHCAb™ cadherin mouse mAb (BGT123)

Cat #: B-IMW6823

Size: 100 µL

Storage: Store at -20°C. Avoid repeated freeze / thaw cycles.

### Product Information

**Applications/Dilution:** IHC-p 1:100-500, WB 1:200-1000, IF 1:100-500

**Isotype/Source:** Mouse, Monoclonal/IgG2a, Kappa

**Specificity:** The antibody can recognize many isotypes of cadherin including E-cadherin, N-cadherin, P-cadherin and R-cadherin. In western blotting of A431 and MCF7 cell lysates, the antibody can label a 130KDa b.

**Subcellular Location:** Cell junction, adherens junction . Cell membrane ; Single-pass type I membrane protein. Endosome. Golgi apparatus, trans-Golgi network. Colocalizes with DLGAP5 at sites of cell-cell contact in intestinal epithelial cells. Anchored to actin microfilaments through association with alpha-, beta- and gamma-catenin. Sequential proteolysis induced by apoptosis or calcium influx, results in translocation from sites of cell-cell contact to the cytoplasm. Colocalizes with RAB11A endosomes during its transport from the Golgi apparatus to the plasma membrane

**Expression:** Non-neural epithelial tissues

**Formulation:** Liquid in PBS containing 50% glycerol, 0.5% BSA and 0.89% sodium azide

**Storage:** Store at -15°C to -25°C

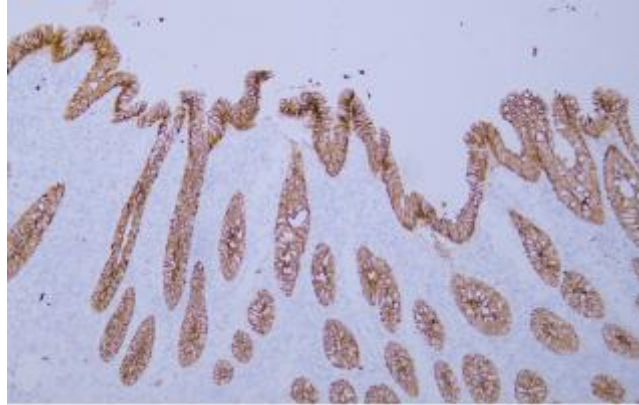


Fig.1. Human appendix tissue was stained with anti-cadherin antibody

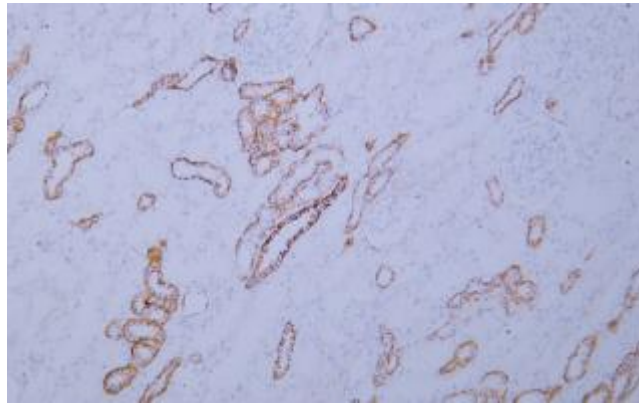


Fig.2. Human kidney tissue was stained with anti-cadherin antibody

**Note:**

The product listed herein is for research use only and is not intended for use in human or clinical diagnosis.