

IHCAb™ CD14 mouse mAb (BGT021)

Cat #: B-IMW6816

Size: 100 µL

Storage: Store at -20°C. Avoid repeated freeze / thaw cycles.

Background

The protein encoded by this gene is a surface antigen that is preferentially expressed on monocytes/macrophages. It cooperates with other proteins to mediate the innate immune response to bacterial lipopolysaccharide. Alternative splicing results in multiple transcript variants encoding the same protein.

Product Information

Applications/Dilution: IHC-p 1:100-500, WB 1:200-1000, IF 1:100-500

Isotype/Source: Mouse, Monoclonal/IgG2b, Kappa

Specificity: The antibody can specifically recognize human CD14 protein.

Subcellular Location: Cell membrane ; Lipid-anchor, GPI-anchor . Secreted . Membrane raft . Golgi apparatus . Secreted forms may arise by cleavage of the GPI anchor

Expression: Detected on macrophages (at protein level) (PubMed:1698311). Expressed strongly on the surface of monocytes and weakly on the surface of granulocytes; also expressed by most tissue macrophages

Formulation: Liquid in PBS containing 50% glycerol, 0.5% BSA and 0.62% sodium azide

Storage: Store at -15°C to -25°C

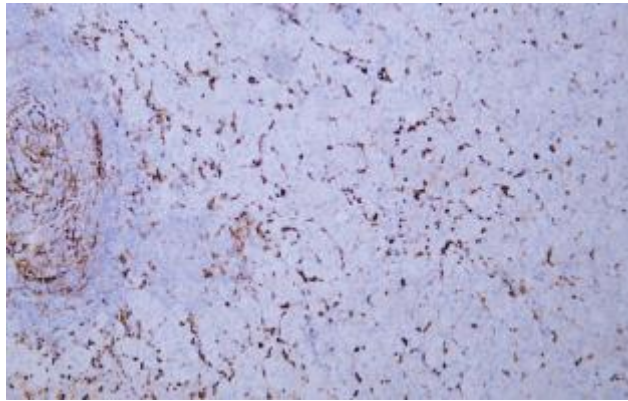


Fig.1. Human adrenal gland tissue was stained with anti-CD14 antibody

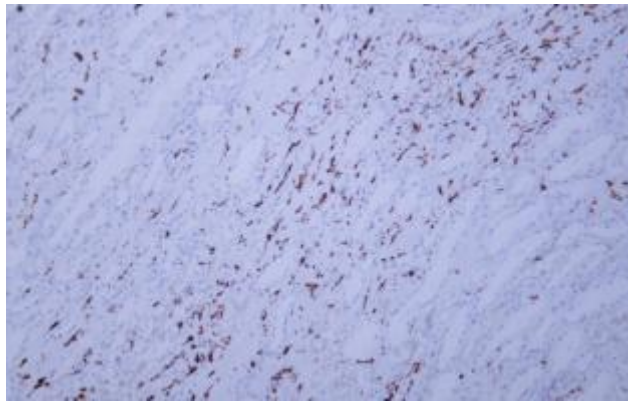


Fig.2. Human kidney tissue was stained with anti-CD14 antibody

Note:

The product listed herein is for research use only and is not intended for use in human or clinical diagnosis.