

IHCAb™ GST-Pi mouse mAb (BGT-GSTP1)

Cat #: B-IMW6765

Size: 100 µL

Storage: Store at -20°C. Avoid repeated freeze / thaw cycles.

Background

Glutathione S-transferases (GSTs) are a family of enzymes that play an important role in detoxification by catalyzing the conjugation of many hydrophobic and electrophilic compounds with reduced glutathione. Based on their biochemical, immunologic, and structural properties, the soluble GSTs are categorized into 4 main classes: alpha, mu, pi, and theta. This GST family member is a polymorphic gene encoding active, functionally different GSTP1 variant proteins that are thought to function in xenobiotic metabolism and play a role in susceptibility to cancer, and other diseases.

Product Information

Applications/Dilution: IHC-p 1:50-500 WB 1:1000-2000. IF 1:50-200

Isotype/Source: Monoclonal, Mouse

Specificity: This antibody detects endogenous levels of human GST-Pi, TRIS-EDTA of pH9.0 was used for Heat-induced epitope retrieval (HIER)

Subcellular Location: Cytoplasm . Mitochondrion . Nucleus . The 83 N-terminal amino acids function as an uncleaved transit peptide, and arginine residues within it are crucial for mitochondrial localization.

Formulation: Liquid in PBS containing 50% glycerol, 0.5% BSA and 0.02% sodium azide.

Storage: Store at -15°C to -25°C

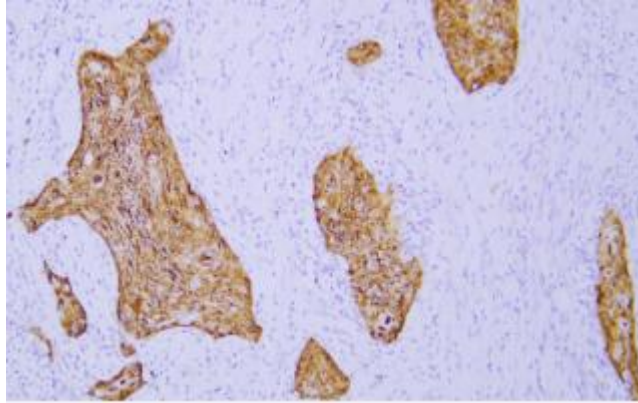


Fig. Immunohistochemical analysis of paraffin-embedded human Esophageal squamous cell carcinoma. 1, Antibody was diluted at 1:200 (4°C overnight). 2, TRIS-EDTA of pH9.0 was used for antigen retrieval. 3, Secondary Antibody was Biogradetech POLY™ Polymer HRP Goat Anti-Rabbit/Mouse IgG(H+L) Secondary Antibody (B-IMWRS11).

Note:

The product listed herein is for research use only and is not intended for use in human or clinical diagnosis.