

IHCAb™ Neuron-Specific Enolase (NSE) mouse mAb (BGT-NSE)

Cat #: B-IMW6754

Size: 100 µL

Storage: Store at -20°C. Avoid repeated freeze / thaw cycles.

Background

enolase 2 (ENO2) Homo sapiens This gene encodes one of the three enolase isoenzymes found in mammals. This isoenzyme, a homodimer, is found in mature neurons and cells of neuronal origin. A switch from alpha enolase to gamma enolase occurs in neural tissue during development in rats and primates.

Product Information

Applications/Dilution: IHC-p 1:100-500, WB 1:200-1000

Isotype/Source: Mouse, Monoclonal/IgG2a, Kappa

Specificity: This antibody detects endogenous levels of human Neuron-Specific Enolase (NSE). Heat-induced epitope retrieval (HIER) TRIS-EDTA of pH9.0 was highly recommended as antigen repair method in paraffin sect

Subcellular Location: Cytoplasm . Cell membrane . Can translocate to the plasma membrane in either the homodimeric (alpha/alpha) or heterodimeric (alpha/gamma) form

Expression: The alpha/alpha homodimer is expressed in embryo and in most adult tissues. The alpha/beta heterodimer and the beta/beta homodimer are found in striated muscle, and the alpha/gamma heterodimer and the gamma/gamma homodimer in neurons.

Formulation: Liquid in PBS containing 50% glycerol, 0.5% BSA and 0.02% sodium azide.

Storage: Store at -15°C to -25°C

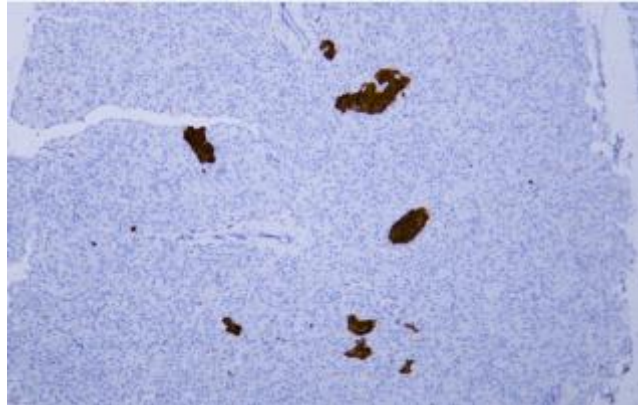


Fig. Human pancreas tissue was stained with Anti-Neuron-Specific Enolase Antibody.

Note:

The product listed herein is for research use only and is not intended for use in human or clinical diagnosis.