

## IHCAb™ p120 catenin mouse mAb (BGT-p120)

Cat #: B-IMW6752

Size: 100 µL

Storage: Store at -20°C. Avoid repeated freeze / thaw cycles.

### Background

catenin delta 1(CTNND1) Homo sapiens This gene encodes a member of the Armadillo protein family, which function in adhesion between cells and signal transduction. Multiple translation initiation codons and alternative splicing result in many different isoforms being translated. Not all of the full-length natures of the described transcript variants have been determined. Read-through transcription also exists between this gene and the neighboring upstream thioredoxin-related transmembrane protein 2 (TMX2) gene.

### Product Information

**Applications/Dilution:** IHC-p 1:300-500, WB 1:500-2000. IF 1:50-200

**Isotype/Source:** Mouse, Monoclonal/IgG2b, Kappa

**Specificity:** This antibody detects endogenous levels of human p120 catenin. Heat-induced epitope retrieval (HIER) TRIS-EDTA of pH9.0 was highly recommended as antigen repair method in paraffin section

**Subcellular Location:** Cell junction, adherens junction . Cytoplasm . Nucleus . Cell membrane . Interaction with GLIS2 promotes nuclear translocation (By similarity). Detected at cell-cell contacts (PubMed:15240885, PubMed:17047063). NANOS1 induces its translocation from sites of cell-cell contact to the cytoplasm (PubMed:17047063). CDH1 enhances cell membrane localization (PubMed:15240885). Isoforms 4A and 1AB are excluded from the nucleus (PubMed:11896187). .; [Isoform 1A]: Nucleus .; [Isoform 2A]: Nucleus .; [Isoform 3A]: Nucleus

**Expression:** Expressed in vascular endothelium. Melanocytes and melanoma cells primarily express the long isoform 1A, whereas keratinocytes express shorter isoforms, especially 3A. The shortest isoform 4A, is detected in normal keratinocytes and melanocytes, and generally lost from cells derived from squamous cell carcinomas or melanomas.

The C-terminal alternatively spliced exon B is present in the p120ctn transcripts in the colon, intestine and prostate, but lost in several tumor tissues derived from these organs.

**Formulation:** Liquid in PBS containing 50% glycerol, 0.5% BSA and 0.02% sodium azide.

**Storage:** Store at -15°C to -25°C

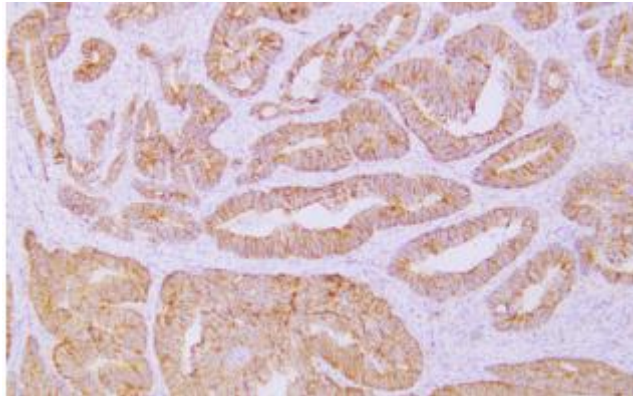


Fig. Immunohistochemical analysis of paraffin-embedded Colon carcinoma. 1, Antibody was diluted at 1:200(4° overnight). 2, TRIS-EDTA of pH9.0 was used for antigen retrieval. 3,Secondary Antibody was Biogradetech POLY™ Polymer HRP Goat Anti-Rabbit/Mouse IgG(H+L) Secondary Antibody (B-IMWRS11).

**Note:**

The product listed herein is for research use only and is not intended for use in human or clinical diagnosis.