

## IHCAb™ Mart-1/Melan-A mouse mAb (BGT-Mart1)

Cat #: B-IMW6702

Size: 100 µL

Storage: Store at -20°C. Avoid repeated freeze / thaw cycles.

### Background

tissue specificity: Expression is restricted to melanoma and melanocyte cell lines and retina.

### Product Information

**Applications/Dilution:** IHC-p 1:300-500. IF 1:50-200

**Isotype/Source:** Mouse, Monoclonal/IgG2b, Kappa

**Specificity:** This antibody detects endogenous levels of human Mart-1/Melan-A. Heat-induced epitope retrieval (HIER) TRIS-EDTA of pH9.0 was highly recommended as antigen repair method in paraffin section

**Subcellular Location:** Endoplasmic reticulum membrane; Single-pass type III membrane protein. Golgi apparatus. Golgi apparatus, trans-Golgi network membrane. Melanosome. Also found in small vesicles and tubules dispersed over the entire cytoplasm. A small fraction of the protein is inserted into the membrane in an inverted orientation. Inversion of membrane topology results in the relocalization of the protein from a predominant Golgi/post-Golgi area to the endoplasmic reticulum. Melanoma cells expressing the protein with an inverted membrane topology are more effectively recognized by specific cytolytic T-lymphocytes than those expressing the protein in its native membrane orientation

**Expression:** Expression is restricted to melanoma and melanocyte cell lines and retina

**Formulation:** Liquid in PBS containing 50% glycerol, 0.5% BSA and 0.02% sodium azide.

**Storage:** Store at -15°C to -25°C

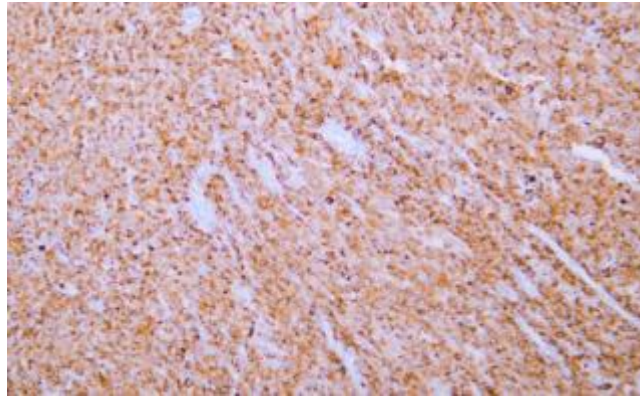


Fig.1. Human malignant mesothelioma tissue was stained with Anti-Melan-A Antibody

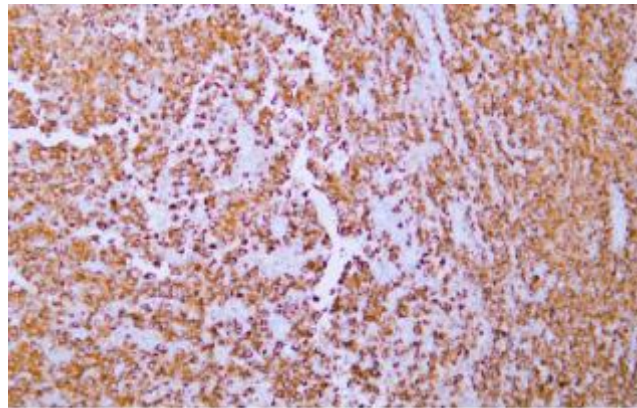


Fig.2. Human malignant mesothelioma tissue was stained with Anti-Melan-A Antibody

**Note:**

The product listed herein is for research use only and is not intended for use in human or clinical diagnosis.