

IHCAb™ Beta-catenin (BGT-Catenin) mouse mAb

Cat #: B-IMW6675

Size: 100 µL

Storage: Store at -20°C. Avoid repeated freeze / thaw cycles.

Background

The protein encoded by this gene is part of a complex of proteins that constitute adherens junctions (AJs). AJs are necessary for the creation and maintenance of epithelial cell layers by regulating cell growth and adhesion between cells. The encoded protein also anchors the actin cytoskeleton and may be responsible for transmitting the contact inhibition signal that causes cells to stop dividing once the epithelial sheet is complete. Finally, this protein binds to the product of the APC gene, which is mutated in adenomatous polyposis of the colon. Mutations in this gene are a cause of colorectal cancer (CRC), pilomatrixoma (PTR), medulloblastoma (MDB), and ovarian cancer. Alternative splicing results in multiple transcript variants.

Product Information

Applications/Dilution: IHC-p 1:100-500, WB 1:200-1000, IF 1:100-500

Isotype/Source: Mouse, Monoclonal/IgG2b, Kappa

Specificity: This antibody detects endogenous levels of human Catenin beta-1 (Beta-catenin). Heat-induced epitope retrieval (HIER) TRIS-EDTA of pH9.0 was highly recommended as antigen repair method in paraffin sec

Subcellular Location: Cytoplasm . Nucleus . Cytoplasm, cytoskeleton . Cell junction, adherens junction . Cell junction . Cell membrane . Cytoplasm, cytoskeleton, microtubule organizing center, centrosome. Cytoplasm, cytoskeleton, spindle pole. Cell junction, synapse . Cytoplasm, cytoskeleton, cilium basal body . Colocalized with RAPGEF2 and TJP1 at cell-cell contacts (By similarity). Cytoplasmic when it is unstabilized (high level of phosphorylation) or bound to CDH1. Translocates to the nucleus when it is stabilized (low level of phosphorylation). Interaction with GLIS2 and MUC1 promotes nuclear translocation. Interaction with EMD inhibits nuclear localization. The majority of beta-catenin is

localized to the cell membrane. In interphase, colocalizes with CROCC between CEP250 puncta at the proximal end of cent

Expression: Expressed in several hair follicle cell types: basal and peripheral matrix cells, and cells of the outer and inner root sheaths. Expressed in colon. Present in cortical neurons (at protein level). Expressed in breast cancer tissues (at protein level)

Formulation: Liquid in PBS containing 50% glycerol, 0.5% BSA and 0.02% sodium azide.

Storage: Store at -15°C to -25°C

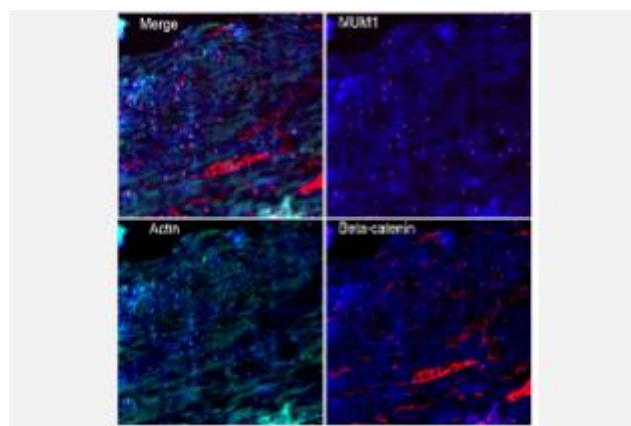


Fig.1. Fluorescence multiplex immunohistochemical analysis of normal human appendix tissue (formalin-fixed paraffin-embedded section).The section was incubated in 3 rounds of staining; in the order of Actin, Beta-catenin, MUM1.,each using a separate fluorescent tyramide signal amplification system.

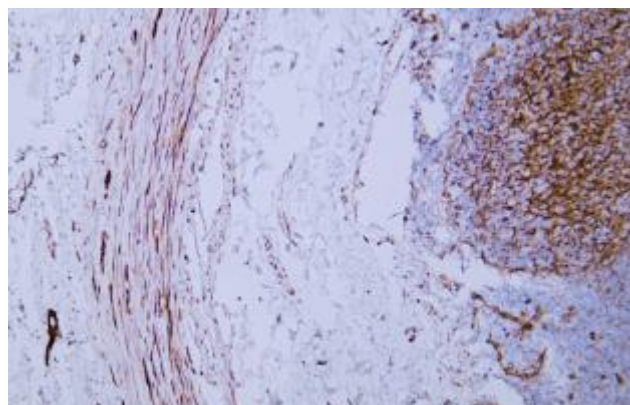


Fig.2. Human appendix tissue was stained with anti-Beta-catenin (BGT-Catenin) antibody.

Note:

The product listed herein is for research use only and is not intended for use in human or clinical diagnosis.