

IHCab™ S100A6 (BGT-S100A6) mouse mAb

Cat #: B-IMW6668

Size: 100 µL

Storage: Store at -20°C. Avoid repeated freeze / thaw cycles.

Background

S100 calcium binding protein A6(S100A6) Homo sapiens The protein encoded by this gene is a member of the S100 family of proteins containing 2 EF-hand calcium-binding motifs. S100 proteins are localized in the cytoplasm and/or nucleus of a wide range of cells, and involved in the regulation of a number of cellular processes such as cell cycle progression and differentiation. S100 genes include at least 13 members which are located as a cluster on chromosome 1q21. This protein may function in stimulation of Ca²⁺-dependent insulin release, stimulation of prolactin secretion, and exocytosis. Chromosomal rearrangements and altered expression of this gene have been implicated in melanoma.

Product Information

Applications/Dilution: IHC-p 1:100-500. IF 1:50-200

Isotype/Source: Mouse, Monoclonal/IgG1, Kappa

Specificity: This antibody detects endogenous levels of human S100A6. Heat-induced epitope retrieval (HIER) TRIS-EDTA of pH8.0 was highly recommended as antigen repair method in paraffin section

Subcellular Location: Nucleus envelope. Cytoplasm. Cell membrane; Peripheral membrane protein; Cytoplasmic side

Expression: Brain,Fibroblast,Placenta,Platelet

Formulation: Liquid in PBS containing 50% glycerol, 0.5% BSA and 0.02% sodium azide.

Storage: Store at -15°C to -25°C

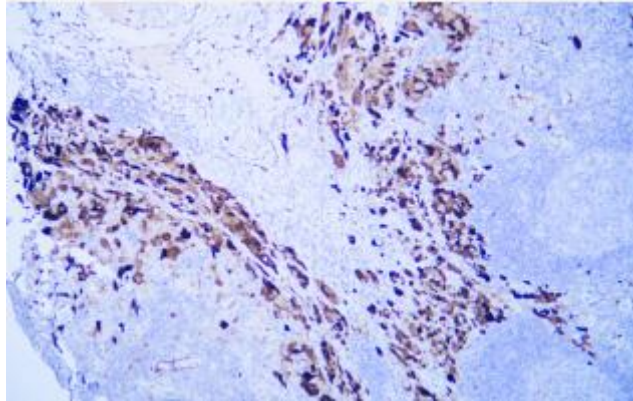


Fig.1. Human malignant melanoma tissue was stained with Anti-S100A6 Antibody

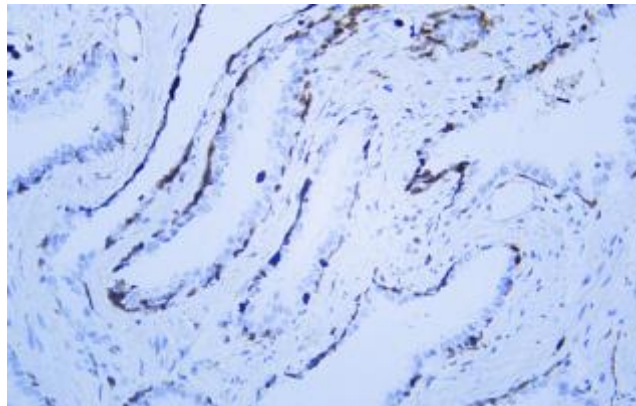


Fig.2. Human prostate tissue was stained with Anti-S100A6 Antibody

Note:

The product listed herein is for research use only and is not intended for use in human or clinical diagnosis.